



401 N. Lindbergh Blvd. St. Louis, MO 63141

Tel.: 314.993.1700, #546

Toll Free: 800.424.2841, #546

Fax: 800.708.1364

Cell: 314.283.1983

Send via email to: jbode@aaortho.org and/or cyoung@aaortho.org

AAO Foundation Final report
(a/o 6/30/2018)

In an attempt to make things a little easier for the reviewer who will read this report, please consider these two questions before this is sent for review:

Is this an example of your very best work, in that it provides sufficient explanation and justification, and is something otherwise worthy of publication?

Does this Report provide the level of detail, etc. that you would expect, if you were the reviewer?

Type of Award (Check One):

Orthodontic Faculty Development Fellowship Award

Postdoctoral Fellowship Award

Biomedical Research Award

Center Award

Educational Innovation Award

Program Award

Research Aid Award

Name(s) of Principal Investigator(s): Sarandeep Huja

Institution: Medical University of South

Title of Project: Digital Workflows in Orthodontics: Trueness and Precision of Scanners and Bracket Erase software

Period of AAOF support (e.g. 07-01-19 to 6-30-20): 07-01-21 to **12-31-22**

Amount of AAOF Funding: \$29,998.70

PLEASE ADDRESS EACH CATEGORY SEPARATELY (single spaced)

Abstract:

1. Specific Aims

Aim 1: A single dentate cadaver will be used to examine the following subaims
A: **Determine trueness and precision of three clinical intraoral scanners.** A scan of a maxillary and mandibular arch, to correspond to, no brackets typical to prior to orthodontics, pre-debond and post-debond timepoints will be assessed. The clinical scanners will be compared to an industrial “gold standard” ATOS scanner. B: **Determine the trueness and precision of five bracket erase software.** We will be comparing the pre-bracket placement ATOS scan to the virtual bracket deletes rendering made from the post bracket placement ATOS scan. Each of the 5 different bracket erase software will be used 8 times each per (2) arch for a total of 80 arches of bracket deletes.

Aim 2: To determine trueness and precision of virtual bracket erase software by examining both the arch (mandibular vs maxillary) and tooth type in scans obtained from patients. Pre-debond scans from patients will subject to virtual bracket removal and then compared to scans obtained after debond by an experienced clinician. Trends will be analyzed to determine if the software works better on specific teeth or if a specific arch is more accurate/precise. Five commercially available software will be analyzed and compared to determine if a specific software is more accurate/precise at removing brackets and recreating the natural tooth contours.

Detailed results and inferences:

Summarize which studies have already been conducted and results achieved, particularly in reference to specific aims (investigated hypothesis(es) and corresponding findings).

We have completed Aim 1. We have included the details in two attachments

1. Oral Presentation at the 2022 AADOCR meeting that received a prestigious travel award.
2. Poster presentation the Scholars day at MUSC.

Please see the details of the results in these two presentations. I have also included the data collection for Aim 2.

Were the original, specific aims of the proposal realized?

Yes

Were the results published

Not yet, in a manuscript format but yes, in abstract, oral presentation. Manuscript in preparation.

Publications/presentations

Data was presented at the 2022 AADOCR meeting and at MUSC College research day. A possible talk at Midwest Angle meeting in 2024 is planned.

To what extent have you used, or how do you intend to use, AAOF funding to further your career?*

I have been grateful and fortunate to receive AAOF funding throughout my career and I am very grateful. I have made multiple recorded testimonies with the AAOF and other organizations on the value and benefit of the AAOF.

Percentage funding from AAOF and other sources; amount of grant funds already spent

Request/justification for extension of present cycle: do the investigator(s) foresee a time extension for this project and why?

100% spent, the original project budget ran over and was funded by the discretion funds to the PI by about \$5500.00

Illustrations, addendum

Please see 3 enclosures

PATIENT 1

| Software | "+Avg" | "-Avg" | Arch | Teeth |
|----------|--------|---------|-----------|---------------------|
| 4 | 0.3133 | -0.0433 | Maxillary | Molars |
| 4 | 0.3006 | -0.0505 | Maxillary | Molars |
| 4 | 0.2828 | -0.0408 | Maxillary | Molars |
| 4 | 0.3527 | -0.0658 | Maxillary | Molars |
| 4 | 0.3292 | -0.0429 | Maxillary | Molars |
| 4 | 0.3405 | -0.0455 | Maxillary | Molars |
| 4 | 0.3304 | -0.0882 | Maxillary | Molars |
| 4 | 0.3181 | -0.0516 | Maxillary | Molars |
| 3 | 0.3778 | -0.0341 | Maxillary | Molars |
| 3 | 0.3847 | -0.0388 | Maxillary | Molars |
| 3 | 0.3225 | -0.0336 | Maxillary | Molars |
| 3 | 0.326 | -0.0442 | Maxillary | Molars |
| 3 | 0.2875 | -0.04 | Maxillary | Molars |
| 3 | 0.3634 | -0.0368 | Maxillary | Molars |
| 3 | 0.3669 | -0.0354 | Maxillary | Molars |
| 3 | 0.2996 | -0.038 | Maxillary | Molars |
| 2 | 0.3328 | -0.0355 | Maxillary | Molars |
| 2 | 0.3322 | -0.0346 | Maxillary | Molars |
| 2 | 0.3787 | -0.0333 | Maxillary | Molars |
| 2 | 0.3117 | -0.0354 | Maxillary | Molars |
| 2 | 0.3675 | -0.0315 | Maxillary | Molars |
| 2 | 0.3625 | -0.0358 | Maxillary | Molars |
| 2 | 0.3786 | -0.0332 | Maxillary | Molars |
| 2 | 0.3705 | -0.031 | Maxillary | Molars |
| 5 | 0.3275 | -0.031 | Maxillary | Molars |
| 5 | 0.3559 | -0.0387 | Maxillary | Molars |
| 5 | 0.3686 | -0.0413 | Maxillary | Molars |
| 5 | 0.377 | -0.0305 | Maxillary | Molars |
| 5 | 0.4488 | -0.0373 | Maxillary | Molars |
| 5 | 0.3844 | -0.0318 | Maxillary | Molars |
| 5 | 0.3762 | -0.0322 | Maxillary | Molars |
| 5 | 0.3268 | -0.0399 | Maxillary | Molars |
| 1 | 0.3156 | -0.0393 | Maxillary | Molars |
| 1 | 0.2727 | -0.0296 | Maxillary | Molars |
| 1 | 0.2847 | -0.0275 | Maxillary | Molars |
| 1 | 0.3712 | -0.0304 | Maxillary | Molars |
| 1 | 0.2401 | -0.0396 | Maxillary | Molars |
| 1 | 0.2983 | -0.0302 | Maxillary | Molars |
| 1 | 0.2993 | -0.0833 | Maxillary | Molars |
| 1 | 0.2544 | -0.0408 | Maxillary | Molars |
| 4 | 0.186 | -0.0378 | Maxillary | Premolars + Canines |
| 4 | 0.1932 | -0.0317 | Maxillary | Premolars + Canines |
| 4 | 0.2046 | -0.0556 | Maxillary | Premolars + Canines |
| 4 | 0.236 | -0.0384 | Maxillary | Premolars + Canines |

| | | | |
|---|--------|-------------------|---------------------|
| 4 | 0.182 | -0.0425 Maxillary | Premolars + Canines |
| 4 | 0.2159 | -0.0383 Maxillary | Premolars + Canines |
| 4 | 0.1846 | -0.0256 Maxillary | Premolars + Canines |
| 4 | 0.2367 | -0.0309 Maxillary | Premolars + Canines |
| 3 | 0.2409 | -0.0312 Maxillary | Premolars + Canines |
| 3 | 0.2251 | -0.0237 Maxillary | Premolars + Canines |
| 3 | 0.2187 | -0.0478 Maxillary | Premolars + Canines |
| 3 | 0.1806 | -0.0534 Maxillary | Premolars + Canines |
| 3 | 0.1892 | -0.0377 Maxillary | Premolars + Canines |
| 3 | 0.2003 | -0.0745 Maxillary | Premolars + Canines |
| 3 | 0.2318 | -0.0275 Maxillary | Premolars + Canines |
| 3 | 0.1729 | -0.0917 Maxillary | Premolars + Canines |
| 2 | 0.1686 | -0.0388 Maxillary | Premolars + Canines |
| 2 | 0.1684 | -0.1059 Maxillary | Premolars + Canines |
| 2 | 0.1599 | -0.0787 Maxillary | Premolars + Canines |
| 2 | 0.1396 | -0.1358 Maxillary | Premolars + Canines |
| 2 | 0.1896 | -0.0606 Maxillary | Premolars + Canines |
| 2 | 0.18 | -0.0459 Maxillary | Premolars + Canines |
| 2 | 0.1595 | -0.0155 Maxillary | Premolars + Canines |
| 2 | 0.1468 | -0.0289 Maxillary | Premolars + Canines |
| 5 | 0.2028 | -0.0601 Maxillary | Premolars + Canines |
| 5 | 0.2711 | -0.0453 Maxillary | Premolars + Canines |
| 5 | 0.2203 | -0.0361 Maxillary | Premolars + Canines |
| 5 | 0.2687 | -0.0233 Maxillary | Premolars + Canines |
| 5 | 0.2183 | -0.0138 Maxillary | Premolars + Canines |
| 5 | 0.2222 | -0.0213 Maxillary | Premolars + Canines |
| 5 | 0.2021 | -0.0265 Maxillary | Premolars + Canines |
| 5 | 0.2233 | -0.0681 Maxillary | Premolars + Canines |
| 1 | 0.1451 | -0.0439 Maxillary | Premolars + Canines |
| 1 | 0.1544 | -0.0785 Maxillary | Premolars + Canines |
| 1 | 0.1941 | -0.0275 Maxillary | Premolars + Canines |
| 1 | 0.1991 | -0.0359 Maxillary | Premolars + Canines |
| 1 | 0.1811 | -0.0839 Maxillary | Premolars + Canines |
| 1 | 0.1928 | -0.0225 Maxillary | Premolars + Canines |
| 1 | 0.1927 | -0.0886 Maxillary | Premolars + Canines |
| 1 | 0.173 | -0.0636 Maxillary | Premolars + Canines |
| 4 | 0.1094 | -0.0528 Maxillary | Incisors |
| 4 | 0.1313 | -0.0489 Maxillary | Incisors |
| 4 | 0.097 | -0.0478 Maxillary | Incisors |
| 4 | 0.1097 | -0.0425 Maxillary | Incisors |
| 4 | 0.1037 | -0.0398 Maxillary | Incisors |
| 4 | 0.1348 | -0.0262 Maxillary | Incisors |
| 4 | 0.1387 | -0.032 Maxillary | Incisors |
| 4 | 0.104 | -0.0452 Maxillary | Incisors |
| 3 | 0.1874 | -0.0185 Maxillary | Incisors |
| 3 | 0.1683 | -0.0216 Maxillary | Incisors |
| 3 | 0.1601 | -0.0196 Maxillary | Incisors |

| | | | | |
|---|--------|---------|------------|----------|
| 3 | 0.1744 | -0.0204 | Maxillary | Incisors |
| 3 | 0.1711 | -0.0189 | Maxillary | Incisors |
| 3 | 0.1717 | -0.0199 | Maxillary | Incisors |
| 3 | 0.1697 | -0.0198 | Maxillary | Incisors |
| 3 | 0.1694 | -0.02 | Maxillary | Incisors |
| 2 | 0.1898 | -0.0161 | Maxillary | Incisors |
| 2 | 0.1968 | -0.0176 | Maxillary | Incisors |
| 2 | 0.1918 | -0.0183 | Maxillary | Incisors |
| 2 | 0.1828 | -0.018 | Maxillary | Incisors |
| 2 | 0.1887 | -0.0214 | Maxillary | Incisors |
| 2 | 0.1828 | -0.0169 | Maxillary | Incisors |
| 2 | 0.1863 | -0.0169 | Maxillary | Incisors |
| 2 | 0.1886 | -0.0162 | Maxillary | Incisors |
| 5 | 0.2086 | -0.0232 | Maxillary | Incisors |
| 5 | 0.2278 | -0.0211 | Maxillary | Incisors |
| 5 | 0.2277 | -0.0369 | Maxillary | Incisors |
| 5 | 0.2541 | -0.019 | Maxillary | Incisors |
| 5 | 0.2808 | -0.0253 | Maxillary | Incisors |
| 5 | 0.1921 | -0.026 | Maxillary | Incisors |
| 5 | 0.2099 | -0.0286 | Maxillary | Incisors |
| 5 | 0.2281 | -0.0227 | Maxillary | Incisors |
| 1 | 0.1653 | -0.02 | Maxillary | Incisors |
| 1 | 0.188 | -0.0191 | Maxillary | Incisors |
| 1 | 0.1731 | -0.0204 | Maxillary | Incisors |
| 1 | 0.1514 | -0.0194 | Maxillary | Incisors |
| 1 | 0.1572 | -0.019 | Maxillary | Incisors |
| 1 | 0.1769 | -0.0205 | Maxillary | Incisors |
| 1 | 0.1937 | -0.0196 | Maxillary | Incisors |
| 1 | 0.184 | -0.0194 | Maxillary | Incisors |
| 4 | 0.2266 | -0.038 | Mandibular | Molars |
| 4 | 0.2462 | -0.0798 | Mandibular | Molars |
| 4 | 0.2866 | -0.0386 | Mandibular | Molars |
| 4 | 0.2195 | -0.0492 | Mandibular | Molars |
| 4 | 0.2135 | -0.0456 | Mandibular | Molars |
| 4 | 0.2148 | -0.04 | Mandibular | Molars |
| 4 | 0.1914 | -0.0563 | Mandibular | Molars |
| 4 | 0.2298 | -0.0521 | Mandibular | Molars |
| 3 | 0.2188 | -0.0508 | Mandibular | Molars |
| 3 | 0.183 | -0.0432 | Mandibular | Molars |
| 3 | 0.2637 | -0.0381 | Mandibular | Molars |
| 3 | 0.2124 | -0.0305 | Mandibular | Molars |
| 3 | 0.2961 | -0.0286 | Mandibular | Molars |
| 3 | 0.2522 | -0.0415 | Mandibular | Molars |
| 3 | 0.2242 | -0.0626 | Mandibular | Molars |
| 3 | 0.2038 | -0.0357 | Mandibular | Molars |
| 2 | 0.2117 | -0.0321 | Mandibular | Molars |
| 2 | 0.2406 | -0.0451 | Mandibular | Molars |

| | | | | |
|---|--------|---------|------------|---------------------|
| 2 | 0.2657 | -0.0434 | Mandibular | Molars |
| 2 | 0.2109 | -0.0377 | Mandibular | Molars |
| 2 | 0.2277 | -0.0342 | Mandibular | Molars |
| 2 | 0.2183 | -0.0275 | Mandibular | Molars |
| 2 | 0.22 | -0.0327 | Mandibular | Molars |
| 2 | 0.2157 | -0.0306 | Mandibular | Molars |
| 5 | 0.1964 | -0.0295 | Mandibular | Molars |
| 5 | 0.1793 | -0.0513 | Mandibular | Molars |
| 5 | 0.1518 | -0.0341 | Mandibular | Molars |
| 5 | 0.1806 | -0.0311 | Mandibular | Molars |
| 5 | 0.1901 | -0.0413 | Mandibular | Molars |
| 5 | 0.1593 | -0.0413 | Mandibular | Molars |
| 5 | 0.2994 | -0.0514 | Mandibular | Molars |
| 5 | 0.1772 | -0.032 | Mandibular | Molars |
| 1 | 0.253 | -0.0577 | Mandibular | Molars |
| 1 | 0.1229 | -0.0339 | Mandibular | Molars |
| 1 | 0.1941 | -0.0292 | Mandibular | Molars |
| 1 | 0.1568 | -0.0261 | Mandibular | Molars |
| 1 | 0.1255 | -0.0323 | Mandibular | Molars |
| 1 | 0.1603 | -0.0376 | Mandibular | Molars |
| 1 | 0.1626 | -0.0585 | Mandibular | Molars |
| 1 | 0.192 | -0.0499 | Mandibular | Molars |
| 4 | 0.1643 | -0.0343 | Mandibular | Premolars + Canines |
| 4 | 0.1265 | -0.0355 | Mandibular | Premolars + Canines |
| 4 | 0.1383 | -0.0286 | Mandibular | Premolars + Canines |
| 4 | 0.1535 | -0.0264 | Mandibular | Premolars + Canines |
| 4 | 0.1353 | -0.0299 | Mandibular | Premolars + Canines |
| 4 | 0.1728 | -0.0211 | Mandibular | Premolars + Canines |
| 4 | 0.1353 | -0.0312 | Mandibular | Premolars + Canines |
| 4 | 0.1622 | -0.0295 | Mandibular | Premolars + Canines |
| 3 | 0.1054 | -0.0328 | Mandibular | Premolars + Canines |
| 3 | 0.0962 | -0.0353 | Mandibular | Premolars + Canines |
| 3 | 0.104 | -0.0349 | Mandibular | Premolars + Canines |
| 3 | 0.1105 | -0.0345 | Mandibular | Premolars + Canines |
| 3 | 0.0985 | -0.0338 | Mandibular | Premolars + Canines |
| 3 | 0.0954 | -0.0412 | Mandibular | Premolars + Canines |
| 3 | 0.1013 | -0.0334 | Mandibular | Premolars + Canines |
| 3 | 0.1087 | -0.0339 | Mandibular | Premolars + Canines |
| 2 | 0.0819 | -0.0494 | Mandibular | Premolars + Canines |
| 2 | 0.0981 | -0.0405 | Mandibular | Premolars + Canines |
| 2 | 0.0944 | -0.0469 | Mandibular | Premolars + Canines |
| 2 | 0.0687 | -0.0481 | Mandibular | Premolars + Canines |
| 2 | 0.0882 | -0.0468 | Mandibular | Premolars + Canines |
| 2 | 0.0917 | -0.0483 | Mandibular | Premolars + Canines |
| 2 | 0.0815 | -0.0497 | Mandibular | Premolars + Canines |
| 2 | 0.0854 | -0.0372 | Mandibular | Premolars + Canines |
| 5 | 0.1198 | -0.0469 | Mandibular | Premolars + Canines |

| | | | | |
|---|--------|---------|------------|---------------------|
| 5 | 0.1219 | -0.0605 | Mandibular | Premolars + Canines |
| 5 | 0.1093 | -0.049 | Mandibular | Premolars + Canines |
| 5 | 0.1727 | -0.0448 | Mandibular | Premolars + Canines |
| 5 | 0.1808 | -0.0364 | Mandibular | Premolars + Canines |
| 5 | 0.1107 | -0.0592 | Mandibular | Premolars + Canines |
| 5 | 0.2958 | -0.032 | Mandibular | Premolars + Canines |
| 5 | 0.147 | -0.0357 | Mandibular | Premolars + Canines |
| 1 | 0.082 | -0.0416 | Mandibular | Premolars + Canines |
| 1 | 0.109 | -0.0571 | Mandibular | Premolars + Canines |
| 1 | 0.1109 | -0.0326 | Mandibular | Premolars + Canines |
| 1 | 0.0969 | -0.0511 | Mandibular | Premolars + Canines |
| 1 | 0.0865 | -0.0427 | Mandibular | Premolars + Canines |
| 1 | 0.0921 | -0.0355 | Mandibular | Premolars + Canines |
| 1 | 0.0734 | -0.0523 | Mandibular | Premolars + Canines |
| 1 | 0.0793 | -0.0482 | Mandibular | Premolars + Canines |
| 4 | 0.1685 | -0.0314 | Mandibular | Incisors |
| 4 | 0.2396 | -0.031 | Mandibular | Incisors |
| 4 | 0.2239 | -0.0131 | Mandibular | Incisors |
| 4 | 0.1683 | -0.024 | Mandibular | Incisors |
| 4 | 0.1719 | -0.0475 | Mandibular | Incisors |
| 4 | 0.1997 | -0.005 | Mandibular | Incisors |
| 4 | 0.2459 | -0.0221 | Mandibular | Incisors |
| 4 | 0.2381 | -0.0072 | Mandibular | Incisors |
| 3 | 0.2136 | -0.0076 | Mandibular | Incisors |
| 3 | 0.1641 | -0.0082 | Mandibular | Incisors |
| 3 | 0.1704 | -0.0074 | Mandibular | Incisors |
| 3 | 0.179 | -0.008 | Mandibular | Incisors |
| 3 | 0.1791 | -0.0069 | Mandibular | Incisors |
| 3 | 0.1765 | -0.0085 | Mandibular | Incisors |
| 3 | 0.1771 | -0.0082 | Mandibular | Incisors |
| 3 | 0.1545 | -0.0073 | Mandibular | Incisors |
| 2 | 0.1999 | -0.0058 | Mandibular | Incisors |
| 2 | 0.2173 | -0.0065 | Mandibular | Incisors |
| 2 | 0.2769 | -0.0081 | Mandibular | Incisors |
| 2 | 0.1994 | -0.0069 | Mandibular | Incisors |
| 2 | 0.2806 | -0.0042 | Mandibular | Incisors |
| 2 | 0.2191 | -0.008 | Mandibular | Incisors |
| 2 | 0.2308 | -0.0065 | Mandibular | Incisors |
| 2 | 0.263 | -0.0153 | Mandibular | Incisors |
| 5 | 0.2104 | -0.0268 | Mandibular | Incisors |
| 5 | 0.2741 | 0 | Mandibular | Incisors |
| 5 | 0.1918 | -0.0152 | Mandibular | Incisors |
| 5 | 0.3105 | -0.0376 | Mandibular | Incisors |
| 5 | 0.25 | -0.0047 | Mandibular | Incisors |
| 5 | 0.2569 | -0.0096 | Mandibular | Incisors |
| 5 | 0.3889 | 0 | Mandibular | Incisors |
| 5 | 0.2112 | -0.0235 | Mandibular | Incisors |

| | | | | |
|---|--------|---------|------------|----------|
| 1 | 0.1454 | -0.0156 | Mandibular | Incisors |
| 1 | 0.234 | -0.007 | Mandibular | Incisors |
| 1 | 0.2478 | -0.0047 | Mandibular | Incisors |
| 1 | 0.2216 | -0.0081 | Mandibular | Incisors |
| 1 | 0.1772 | -0.012 | Mandibular | Incisors |
| 1 | 0.2114 | -0.0153 | Mandibular | Incisors |
| 1 | 0.1318 | -0.0706 | Mandibular | Incisors |
| 1 | 0.1573 | -0.0163 | Mandibular | Incisors |

PATIENT 2

| Software | "+Avg" | "-Avg" | Arch | Teeth |
|----------|--------|---------|-----------|---------------------|
| 4 | 0.3051 | -0.059 | Maxillary | Molars |
| 4 | 0.3346 | -0.0382 | Maxillary | Molars |
| 4 | 0.3363 | -0.0536 | Maxillary | Molars |
| 4 | 0.3402 | -0.0277 | Maxillary | Molars |
| 4 | 0.3561 | -0.0543 | Maxillary | Molars |
| 4 | 0.3097 | -0.0324 | Maxillary | Molars |
| 4 | 0.3042 | -0.042 | Maxillary | Molars |
| 4 | 0.332 | -0.0282 | Maxillary | Molars |
| 3 | 0.2376 | -0.0268 | Maxillary | Molars |
| 3 | 0.2282 | -0.087 | Maxillary | Molars |
| 3 | 0.2051 | -0.1295 | Maxillary | Molars |
| 3 | 0.2469 | -0.2415 | Maxillary | Molars |
| 3 | 0.1864 | -0.1413 | Maxillary | Molars |
| 3 | 0.1986 | -0.1298 | Maxillary | Molars |
| 3 | 0.1336 | -0.1412 | Maxillary | Molars |
| 3 | 0.1729 | -0.1728 | Maxillary | Molars |
| 2 | 0.36 | -0.0532 | Maxillary | Molars |
| 2 | 0.3454 | -0.0652 | Maxillary | Molars |
| 2 | 0.3456 | -0.0499 | Maxillary | Molars |
| 2 | 0.3721 | -0.0475 | Maxillary | Molars |
| 2 | 0.3413 | -0.0772 | Maxillary | Molars |
| 2 | 0.3476 | -0.072 | Maxillary | Molars |
| 2 | 0.365 | -0.045 | Maxillary | Molars |
| 2 | 0.3688 | -0.0527 | Maxillary | Molars |
| 5 | 0.2607 | -0.1051 | Maxillary | Molars |
| 5 | 0.3454 | -0.0614 | Maxillary | Molars |
| 5 | 0.2445 | -0.0414 | Maxillary | Molars |
| 5 | 0.2848 | -0.0575 | Maxillary | Molars |
| 5 | 0.3129 | -0.0452 | Maxillary | Molars |
| 5 | 0.2616 | -0.0472 | Maxillary | Molars |
| 5 | 0.3476 | -0.0544 | Maxillary | Molars |
| 5 | 0.2749 | -0.0682 | Maxillary | Molars |
| 1 | 0.2001 | -0.064 | Maxillary | Molars |
| 1 | 0.2089 | -0.0662 | Maxillary | Molars |
| 1 | 0.2301 | -0.0751 | Maxillary | Molars |
| 1 | 0.1997 | -0.0484 | Maxillary | Molars |
| 1 | 0.2253 | -0.0552 | Maxillary | Molars |
| 1 | 0.2433 | -0.0487 | Maxillary | Molars |
| 1 | 0.2452 | -0.0574 | Maxillary | Molars |
| 1 | 0.1827 | -0.0454 | Maxillary | Molars |
| 4 | 0.293 | -0.0234 | Maxillary | Premolars + Canines |
| 4 | 0.2994 | -0.0209 | Maxillary | Premolars + Canines |
| 4 | 0.3155 | -0.0177 | Maxillary | Premolars + Canines |
| 4 | 0.309 | -0.0239 | Maxillary | Premolars + Canines |

| | | | |
|---|--------|-------------------|---------------------|
| 4 | 0.3163 | -0.0698 Maxillary | Premolars + Canines |
| 4 | 0.3087 | -0.0196 Maxillary | Premolars + Canines |
| 4 | 0.2873 | -0.0106 Maxillary | Premolars + Canines |
| 4 | 0.2898 | -0.0297 Maxillary | Premolars + Canines |
| 3 | 0.152 | -0.0912 Maxillary | Premolars + Canines |
| 3 | 0.1472 | -0.1359 Maxillary | Premolars + Canines |
| 3 | 0.1303 | -0.1434 Maxillary | Premolars + Canines |
| 3 | 0.1339 | -0.1125 Maxillary | Premolars + Canines |
| 3 | 0.128 | -0.1249 Maxillary | Premolars + Canines |
| 3 | 0.1408 | -0.1635 Maxillary | Premolars + Canines |
| 3 | 0.1319 | -0.1365 Maxillary | Premolars + Canines |
| 3 | 0.1068 | -0.0924 Maxillary | Premolars + Canines |
| 2 | 0.1744 | -0.1427 Maxillary | Premolars + Canines |
| 2 | 0.1683 | -0.0259 Maxillary | Premolars + Canines |
| 2 | 0.1315 | -0.1374 Maxillary | Premolars + Canines |
| 2 | 0.1771 | -0.0421 Maxillary | Premolars + Canines |
| 2 | 0.2036 | -0.084 Maxillary | Premolars + Canines |
| 2 | 0.163 | -0.07 Maxillary | Premolars + Canines |
| 2 | 0.2018 | -0.0528 Maxillary | Premolars + Canines |
| 2 | 0.2022 | -0.1135 Maxillary | Premolars + Canines |
| 5 | 0.2398 | -0.2101 Maxillary | Premolars + Canines |
| 5 | 0.2139 | -0.2109 Maxillary | Premolars + Canines |
| 5 | 0.1831 | -0.1081 Maxillary | Premolars + Canines |
| 5 | 0.1994 | -0.1277 Maxillary | Premolars + Canines |
| 5 | 0.178 | -0.1469 Maxillary | Premolars + Canines |
| 5 | 0.2218 | -0.2219 Maxillary | Premolars + Canines |
| 5 | 0.2706 | -0.1581 Maxillary | Premolars + Canines |
| 5 | 0.1956 | -0.135 Maxillary | Premolars + Canines |
| 1 | 0.1012 | -0.0945 Maxillary | Premolars + Canines |
| 1 | 0.1025 | -0.0756 Maxillary | Premolars + Canines |
| 1 | 0.1348 | -0.1723 Maxillary | Premolars + Canines |
| 1 | 0.1184 | -0.1394 Maxillary | Premolars + Canines |
| 1 | 0.1006 | -0.0965 Maxillary | Premolars + Canines |
| 1 | 0.1221 | -0.1245 Maxillary | Premolars + Canines |
| 1 | 0.1206 | -0.1426 Maxillary | Premolars + Canines |
| 1 | 0.1288 | -0.0777 Maxillary | Premolars + Canines |
| 4 | 0.2249 | -0.0204 Maxillary | Incisors |
| 4 | 0.1737 | -0.0273 Maxillary | Incisors |
| 4 | 0.21 | -0.0285 Maxillary | Incisors |
| 4 | 0.2102 | -0.0228 Maxillary | Incisors |
| 4 | 0.2039 | -0.0207 Maxillary | Incisors |
| 4 | 0.1914 | -0.0262 Maxillary | Incisors |
| 4 | 0.1825 | -0.0223 Maxillary | Incisors |
| 4 | 0.1788 | -0.0291 Maxillary | Incisors |
| 3 | 0.114 | -0.0233 Maxillary | Incisors |
| 3 | 0.0913 | -0.0253 Maxillary | Incisors |
| 3 | 0.1073 | -0.0231 Maxillary | Incisors |

| | | | |
|---|--------|--------------------|----------|
| 3 | 0.0849 | -0.0251 Maxillary | Incisors |
| 3 | 0.082 | -0.0224 Maxillary | Incisors |
| 3 | 0.1002 | -0.0233 Maxillary | Incisors |
| 3 | 0.1013 | -0.0243 Maxillary | Incisors |
| 3 | 0.0849 | -0.0215 Maxillary | Incisors |
| 2 | 0.1457 | -0.0235 Maxillary | Incisors |
| 2 | 0.1682 | -0.0227 Maxillary | Incisors |
| 2 | 0.1407 | -0.0262 Maxillary | Incisors |
| 2 | 0.1433 | -0.0231 Maxillary | Incisors |
| 2 | 0.1549 | -0.0247 Maxillary | Incisors |
| 2 | 0.1778 | -0.0268 Maxillary | Incisors |
| 2 | 0.15 | -0.0271 Maxillary | Incisors |
| 2 | 0.153 | -0.0258 Maxillary | Incisors |
| 5 | 0.1542 | -0.0425 Maxillary | Incisors |
| 5 | 0.1792 | -0.035 Maxillary | Incisors |
| 5 | 0.1226 | -0.0422 Maxillary | Incisors |
| 5 | 0.1968 | -0.0345 Maxillary | Incisors |
| 5 | 0.213 | -0.0342 Maxillary | Incisors |
| 5 | 0.1922 | -0.084 Maxillary | Incisors |
| 5 | 0.1995 | -0.0357 Maxillary | Incisors |
| 5 | 0.1484 | -0.0269 Maxillary | Incisors |
| 1 | 0.0971 | -0.0347 Maxillary | Incisors |
| 1 | 0.0767 | -0.0277 Maxillary | Incisors |
| 1 | 0.0594 | -0.0409 Maxillary | Incisors |
| 1 | 0.0599 | -0.0345 Maxillary | Incisors |
| 1 | 0.0762 | -0.0275 Maxillary | Incisors |
| 1 | 0.0989 | -0.0368 Maxillary | Incisors |
| 1 | 0.1042 | -0.0299 Maxillary | Incisors |
| 1 | 0.0709 | -0.0276 Maxillary | Incisors |
| 4 | 0.3378 | -0.0351 Mandibular | Molars |
| 4 | 0.3657 | -0.0106 Mandibular | Molars |
| 4 | 0.351 | -0.0113 Mandibular | Molars |
| 4 | 0.2712 | -0.012 Mandibular | Molars |
| 4 | 0.29 | -0.1722 Mandibular | Molars |
| 4 | 0.3635 | -0.0598 Mandibular | Molars |
| 4 | 0.3676 | -0.0521 Mandibular | Molars |
| 4 | 0.3652 | -0.03 Mandibular | Molars |
| 3 | 0.2618 | -0.0666 Mandibular | Molars |
| 3 | 0.2524 | -0.0288 Mandibular | Molars |
| 3 | 0.2607 | -0.1761 Mandibular | Molars |
| 3 | 0.2483 | -0.0405 Mandibular | Molars |
| 3 | 0.2907 | -0.0437 Mandibular | Molars |
| 3 | 0.2471 | -0.0283 Mandibular | Molars |
| 3 | 0.2709 | -0.0417 Mandibular | Molars |
| 3 | 0.2564 | -0.0158 Mandibular | Molars |
| 2 | 0.3194 | -0.0597 Mandibular | Molars |
| 2 | 0.2732 | -0.022 Mandibular | Molars |

| | | | |
|---|--------|--------------------|---------------------|
| 2 | 0.2997 | -0.0629 Mandibular | Molars |
| 2 | 0.2674 | -0.0928 Mandibular | Molars |
| 2 | 0.2554 | -0.0413 Mandibular | Molars |
| 2 | 0.2673 | -0.0592 Mandibular | Molars |
| 2 | 0.3052 | -0.0801 Mandibular | Molars |
| 2 | 0.2823 | -0.0392 Mandibular | Molars |
| 5 | 0.3386 | -0.0915 Mandibular | Molars |
| 5 | 0.3386 | -0.0155 Mandibular | Molars |
| 5 | 0.2529 | -0.0475 Mandibular | Molars |
| 5 | 0.2817 | -0.0768 Mandibular | Molars |
| 5 | 0.2563 | -0.1145 Mandibular | Molars |
| 5 | 0.2566 | -0.1262 Mandibular | Molars |
| 5 | 0.2828 | -0.1316 Mandibular | Molars |
| 5 | 0.2599 | -0.1279 Mandibular | Molars |
| 1 | 0.2021 | -0.0553 Mandibular | Molars |
| 1 | 0.2063 | -0.0734 Mandibular | Molars |
| 1 | 0.1812 | -0.0637 Mandibular | Molars |
| 1 | 0.1956 | -0.0632 Mandibular | Molars |
| 1 | 0.1923 | -0.0574 Mandibular | Molars |
| 1 | 0.2142 | -0.0663 Mandibular | Molars |
| 1 | 0.2156 | -0.0436 Mandibular | Molars |
| 1 | 0.2056 | -0.0391 Mandibular | Molars |
| 4 | 0.267 | -0.0372 Mandibular | Premolars + Canines |
| 4 | 0.3082 | -0.0299 Mandibular | Premolars + Canines |
| 4 | 0.2755 | -0.034 Mandibular | Premolars + Canines |
| 4 | 0.2746 | -0.0488 Mandibular | Premolars + Canines |
| 4 | 0.3087 | -0.1675 Mandibular | Premolars + Canines |
| 4 | 0.3274 | -0.063 Mandibular | Premolars + Canines |
| 4 | 0.3004 | -0.0392 Mandibular | Premolars + Canines |
| 4 | 0.3164 | -0.0493 Mandibular | Premolars + Canines |
| 3 | 0.1205 | -0.1378 Mandibular | Premolars + Canines |
| 3 | 0.1078 | -0.1205 Mandibular | Premolars + Canines |
| 3 | 0.1079 | -0.1084 Mandibular | Premolars + Canines |
| 3 | 0.1114 | -0.1172 Mandibular | Premolars + Canines |
| 3 | 0.1087 | -0.0851 Mandibular | Premolars + Canines |
| 3 | 0.1163 | -0.1191 Mandibular | Premolars + Canines |
| 3 | 0.1103 | -0.1032 Mandibular | Premolars + Canines |
| 3 | 0.1044 | -0.1192 Mandibular | Premolars + Canines |
| 2 | 0.1375 | -0.0597 Mandibular | Premolars + Canines |
| 2 | 0.1187 | -0.0748 Mandibular | Premolars + Canines |
| 2 | 0.1277 | -0.0694 Mandibular | Premolars + Canines |
| 2 | 0.0789 | -0.0923 Mandibular | Premolars + Canines |
| 2 | 0.1132 | -0.0865 Mandibular | Premolars + Canines |
| 2 | 0.0918 | -0.0799 Mandibular | Premolars + Canines |
| 2 | 0.125 | -0.077 Mandibular | Premolars + Canines |
| 2 | 0.1284 | -0.1099 Mandibular | Premolars + Canines |
| 5 | 0.2898 | -0.0792 Mandibular | Premolars + Canines |

| | | | | |
|---|--------|---------|------------|---------------------|
| 5 | 0.2458 | -0.055 | Mandibular | Premolars + Canines |
| 5 | 0.18 | -0.0961 | Mandibular | Premolars + Canines |
| 5 | 0.2612 | -0.0552 | Mandibular | Premolars + Canines |
| 5 | 0.1945 | -0.1461 | Mandibular | Premolars + Canines |
| 5 | 0.2355 | -0.1329 | Mandibular | Premolars + Canines |
| 5 | 0.164 | -0.1351 | Mandibular | Premolars + Canines |
| 5 | 0.1839 | -0.0695 | Mandibular | Premolars + Canines |
| 1 | 0.0954 | -0.0988 | Mandibular | Premolars + Canines |
| 1 | 0.0945 | -0.0841 | Mandibular | Premolars + Canines |
| 1 | 0.1134 | -0.1084 | Mandibular | Premolars + Canines |
| 1 | 0.0906 | -0.1094 | Mandibular | Premolars + Canines |
| 1 | 0.1175 | -0.1094 | Mandibular | Premolars + Canines |
| 1 | 0.1172 | -0.0924 | Mandibular | Premolars + Canines |
| 1 | 0.0981 | -0.0805 | Mandibular | Premolars + Canines |
| 1 | 0.1046 | -0.1143 | Mandibular | Premolars + Canines |
| 4 | 0.3302 | -0.0062 | Mandibular | Incisors |
| 4 | 0.3756 | -0.0066 | Mandibular | Incisors |
| 4 | 0.2841 | -0.005 | Mandibular | Incisors |
| 4 | 0.2993 | -0.0254 | Mandibular | Incisors |
| 4 | 0.3535 | -0.0456 | Mandibular | Incisors |
| 4 | 0.3378 | 0 | Mandibular | Incisors |
| 4 | 0.3601 | 0 | Mandibular | Incisors |
| 4 | 0.3946 | 0 | Mandibular | Incisors |
| 3 | 0.0775 | -0.0784 | Mandibular | Incisors |
| 3 | 0.0839 | -0.0566 | Mandibular | Incisors |
| 3 | 0.0891 | -0.0842 | Mandibular | Incisors |
| 3 | 0.0868 | -0.0937 | Mandibular | Incisors |
| 3 | 0.1121 | -0.0322 | Mandibular | Incisors |
| 3 | 0.1041 | -0.0499 | Mandibular | Incisors |
| 3 | 0.0844 | -0.0661 | Mandibular | Incisors |
| 3 | 0.0913 | -0.0582 | Mandibular | Incisors |
| 2 | 0.1859 | -0.0187 | Mandibular | Incisors |
| 2 | 0.1659 | -0.0302 | Mandibular | Incisors |
| 2 | 0.1341 | -0.0458 | Mandibular | Incisors |
| 2 | 0.116 | -0.0378 | Mandibular | Incisors |
| 2 | 0.1487 | -0.0274 | Mandibular | Incisors |
| 2 | 0.1368 | -0.0326 | Mandibular | Incisors |
| 2 | 0.1517 | -0.0228 | Mandibular | Incisors |
| 2 | 0.1202 | -0.0388 | Mandibular | Incisors |
| 5 | 0.2641 | -0.0571 | Mandibular | Incisors |
| 5 | 0.4347 | -0.0459 | Mandibular | Incisors |
| 5 | 0.2151 | -0.0481 | Mandibular | Incisors |
| 5 | 0.348 | 0 | Mandibular | Incisors |
| 5 | 0.1818 | -0.0769 | Mandibular | Incisors |
| 5 | 0.2764 | -0.1056 | Mandibular | Incisors |
| 5 | 0.1645 | -0.0515 | Mandibular | Incisors |
| 5 | 0.2085 | -0.0391 | Mandibular | Incisors |

| | | | |
|---|--------|--------------------|----------|
| 1 | 0.0973 | -0.0728 Mandibular | Incisors |
| 1 | 0.1023 | -0.0277 Mandibular | Incisors |
| 1 | 0.0824 | -0.0336 Mandibular | Incisors |
| 1 | 0.0649 | -0.113 Mandibular | Incisors |
| 1 | 0.0908 | -0.0765 Mandibular | Incisors |
| 1 | 0.0927 | -0.1437 Mandibular | Incisors |
| 1 | 0.1152 | -0.0734 Mandibular | Incisors |
| 1 | 0.1239 | -0.0736 Mandibular | Incisors |

PATIENT 3

| Software | "+Avg" | "-Avg" | Arch | Teeth |
|----------|--------|---------|-----------|---------------------|
| 4 | 0.3224 | -0.0619 | Maxillary | Molars |
| 4 | 0.3573 | -0.0552 | Maxillary | Molars |
| 4 | 0.3126 | -0.0746 | Maxillary | Molars |
| 4 | 0.3664 | -0.0675 | Maxillary | Molars |
| 4 | 0.3809 | -0.042 | Maxillary | Molars |
| 4 | 0.2916 | -0.0111 | Maxillary | Molars |
| 4 | 0.3099 | -0.0946 | Maxillary | Molars |
| 4 | 0.3531 | -0.0661 | Maxillary | Molars |
| 3 | 0.317 | -0.1376 | Maxillary | Molars |
| 3 | 0.3001 | -0.1337 | Maxillary | Molars |
| 3 | 0.3272 | -0.0804 | Maxillary | Molars |
| 3 | 0.3162 | -0.0674 | Maxillary | Molars |
| 3 | 0.3319 | -0.0487 | Maxillary | Molars |
| 3 | 0.322 | -0.095 | Maxillary | Molars |
| 3 | 0.3458 | -0.153 | Maxillary | Molars |
| 3 | 0.3252 | -0.0484 | Maxillary | Molars |
| 2 | 0.5757 | -0.0144 | Maxillary | Molars |
| 2 | 0.5947 | -0.0153 | Maxillary | Molars |
| 2 | 0.5681 | -0.0132 | Maxillary | Molars |
| 2 | 0.5555 | -0.0139 | Maxillary | Molars |
| 2 | 0.5518 | -0.0147 | Maxillary | Molars |
| 2 | 0.5657 | -0.0136 | Maxillary | Molars |
| 2 | 0.5646 | -0.0141 | Maxillary | Molars |
| 2 | 0.5497 | -0.0141 | Maxillary | Molars |
| 5 | 0.6075 | -0.0164 | Maxillary | Molars |
| 5 | 0.5874 | 0 | Maxillary | Molars |
| 5 | 0.575 | 0 | Maxillary | Molars |
| 5 | 0.5299 | -0.0169 | Maxillary | Molars |
| 5 | 0.5382 | -0.0054 | Maxillary | Molars |
| 5 | 0.5315 | 0 | Maxillary | Molars |
| 5 | 0.5476 | -0.0385 | Maxillary | Molars |
| 5 | 0.5043 | 0 | Maxillary | Molars |
| 1 | | | Maxillary | Molars |
| 1 | | | Maxillary | Molars |
| 1 | | | Maxillary | Molars |
| 1 | | | Maxillary | Molars |
| 1 | | | Maxillary | Molars |
| 1 | | | Maxillary | Molars |
| 1 | | | Maxillary | Molars |
| 1 | | | Maxillary | Molars |
| 4 | 0.164 | -0.1078 | Maxillary | Premolars + Canines |
| 4 | 0.1798 | -0.0693 | Maxillary | Premolars + Canines |
| 4 | 0.1313 | -0.1485 | Maxillary | Premolars + Canines |

| | | | | |
|---|--------|---------|-----------|---------------------|
| 4 | 0.176 | -0.0659 | Maxillary | Premolars + Canines |
| 4 | 0.153 | -0.1671 | Maxillary | Premolars + Canines |
| 4 | 0.1315 | -0.1351 | Maxillary | Premolars + Canines |
| 4 | 0.201 | -0.1259 | Maxillary | Premolars + Canines |
| 4 | 0.1602 | -0.1559 | Maxillary | Premolars + Canines |
| 3 | 0.1632 | -0.0195 | Maxillary | Premolars + Canines |
| 3 | 0.1787 | -0.0201 | Maxillary | Premolars + Canines |
| 3 | 0.1577 | -0.0255 | Maxillary | Premolars + Canines |
| 3 | 0.1499 | -0.0454 | Maxillary | Premolars + Canines |
| 3 | 0.1559 | -0.0335 | Maxillary | Premolars + Canines |
| 3 | 0.1685 | -0.0177 | Maxillary | Premolars + Canines |
| 3 | 0.1526 | -0.0183 | Maxillary | Premolars + Canines |
| 3 | 0.1516 | -0.0206 | Maxillary | Premolars + Canines |
| 2 | 0.231 | -0.0202 | Maxillary | Premolars + Canines |
| 2 | 0.2008 | -0.0283 | Maxillary | Premolars + Canines |
| 2 | 0.2012 | -0.0228 | Maxillary | Premolars + Canines |
| 2 | 0.2372 | -0.0174 | Maxillary | Premolars + Canines |
| 2 | 0.1971 | -0.042 | Maxillary | Premolars + Canines |
| 2 | 0.2052 | -0.0384 | Maxillary | Premolars + Canines |
| 2 | 0.2033 | -0.0206 | Maxillary | Premolars + Canines |
| 2 | 0.1993 | -0.0323 | Maxillary | Premolars + Canines |
| 5 | 0.2368 | -0.0286 | Maxillary | Premolars + Canines |
| 5 | 0.2927 | -0.0057 | Maxillary | Premolars + Canines |
| 5 | 0.2897 | -0.0459 | Maxillary | Premolars + Canines |
| 5 | 0.2436 | -0.061 | Maxillary | Premolars + Canines |
| 5 | 0.2886 | -0.0474 | Maxillary | Premolars + Canines |
| 5 | 0.2488 | -0.0428 | Maxillary | Premolars + Canines |
| 5 | 0.2278 | -0.0441 | Maxillary | Premolars + Canines |
| 5 | 0.2508 | -0.0466 | Maxillary | Premolars + Canines |
| 1 | | | Maxillary | Premolars + Canines |
| 1 | | | Maxillary | Premolars + Canines |
| 1 | | | Maxillary | Premolars + Canines |
| 1 | | | Maxillary | Premolars + Canines |
| 1 | | | Maxillary | Premolars + Canines |
| 1 | | | Maxillary | Premolars + Canines |
| 1 | | | Maxillary | Premolars + Canines |
| 1 | | | Maxillary | Premolars + Canines |
| 4 | 0.0649 | -0.151 | Maxillary | Incisors |
| 4 | 0.0541 | -0.1102 | Maxillary | Incisors |
| 4 | 0.0814 | -0.184 | Maxillary | Incisors |
| 4 | 0.0652 | -0.1458 | Maxillary | Incisors |
| 4 | 0.0719 | -0.1833 | Maxillary | Incisors |
| 4 | 0.0777 | -0.1531 | Maxillary | Incisors |
| 4 | 0.1211 | -0.089 | Maxillary | Incisors |
| 4 | 0.1265 | -0.1595 | Maxillary | Incisors |
| 3 | 0.1543 | -0.0417 | Maxillary | Incisors |
| 3 | 0.1788 | -0.043 | Maxillary | Incisors |

| | | | | |
|---|--------|---------|------------|----------|
| 3 | 0.1965 | -0.0408 | Maxillary | Incisors |
| 3 | 0.1806 | -0.0435 | Maxillary | Incisors |
| 3 | 0.1692 | -0.0442 | Maxillary | Incisors |
| 3 | 0.1705 | -0.0424 | Maxillary | Incisors |
| 3 | 0.1427 | -0.0448 | Maxillary | Incisors |
| 3 | 0.1651 | -0.0433 | Maxillary | Incisors |
| 2 | 0.2092 | -0.0381 | Maxillary | Incisors |
| 2 | 0.226 | -0.039 | Maxillary | Incisors |
| 2 | 0.2344 | -0.0376 | Maxillary | Incisors |
| 2 | 0.2228 | -0.0406 | Maxillary | Incisors |
| 2 | 0.2254 | -0.0396 | Maxillary | Incisors |
| 2 | 0.1841 | -0.0409 | Maxillary | Incisors |
| 2 | 0.2134 | -0.0406 | Maxillary | Incisors |
| 2 | 0.2018 | -0.0387 | Maxillary | Incisors |
| 5 | 0.2537 | -0.0359 | Maxillary | Incisors |
| 5 | 0.3647 | -0.1093 | Maxillary | Incisors |
| 5 | 0.3455 | -0.0362 | Maxillary | Incisors |
| 5 | 0.234 | -0.0378 | Maxillary | Incisors |
| 5 | 0.1885 | -0.0441 | Maxillary | Incisors |
| 5 | 0.2385 | -0.0289 | Maxillary | Incisors |
| 5 | 0.1805 | -0.1045 | Maxillary | Incisors |
| 5 | 0.256 | -0.0175 | Maxillary | Incisors |
| 1 | | | Maxillary | Incisors |
| 1 | | | Maxillary | Incisors |
| 1 | | | Maxillary | Incisors |
| 1 | | | Maxillary | Incisors |
| 1 | | | Maxillary | Incisors |
| 1 | | | Maxillary | Incisors |
| 1 | | | Maxillary | Incisors |
| 1 | | | Maxillary | Incisors |
| 4 | 0.5313 | -0.0358 | Mandibular | Molars |
| 4 | 0.5027 | -0.0421 | Mandibular | Molars |
| 4 | 0.4684 | -0.0423 | Mandibular | Molars |
| 4 | 0.4968 | -0.0203 | Mandibular | Molars |
| 4 | 0.5046 | -0.0297 | Mandibular | Molars |
| 4 | 0.43 | -0.008 | Mandibular | Molars |
| 4 | 0.4233 | -0.0405 | Mandibular | Molars |
| 4 | 0.4528 | -0.0584 | Mandibular | Molars |
| 3 | 0.3343 | -0.3476 | Mandibular | Molars |
| 3 | 0.3075 | -0.1873 | Mandibular | Molars |
| 3 | 0.283 | -0.1937 | Mandibular | Molars |
| 3 | 0.3005 | -0.181 | Mandibular | Molars |
| 3 | 0.3151 | -0.266 | Mandibular | Molars |
| 3 | 0.3134 | -0.1966 | Mandibular | Molars |
| 3 | 0.284 | -0.2295 | Mandibular | Molars |
| 3 | 0.2765 | -0.2023 | Mandibular | Molars |
| 2 | 0.4369 | -0.1153 | Mandibular | Molars |

| | | | | |
|---|--------|---------|------------|---------------------|
| 2 | 0.4075 | -0.1469 | Mandibular | Molars |
| 2 | 0.4195 | -0.141 | Mandibular | Molars |
| 2 | 0.3969 | -0.1239 | Mandibular | Molars |
| 2 | 0.4525 | -0.1298 | Mandibular | Molars |
| 2 | 0.4207 | -0.1122 | Mandibular | Molars |
| 2 | 0.4042 | -0.1267 | Mandibular | Molars |
| 2 | 0.395 | -0.0958 | Mandibular | Molars |
| 5 | 0.5912 | -0.0001 | Mandibular | Molars |
| 5 | 0.683 | -0.0118 | Mandibular | Molars |
| 5 | 0.7435 | 0 | Mandibular | Molars |
| 5 | 0.6865 | -0.023 | Mandibular | Molars |
| 5 | 0.7688 | -0.0428 | Mandibular | Molars |
| 5 | 0.7163 | -0.0083 | Mandibular | Molars |
| 5 | 0.6906 | -0.0214 | Mandibular | Molars |
| 5 | 0.7391 | 0 | Mandibular | Molars |
| 1 | | | Mandibular | Molars |
| 1 | | | Mandibular | Molars |
| 1 | | | Mandibular | Molars |
| 1 | | | Mandibular | Molars |
| 1 | | | Mandibular | Molars |
| 1 | | | Mandibular | Molars |
| 1 | | | Mandibular | Molars |
| 1 | | | Mandibular | Molars |
| 4 | 0.2469 | -0.0575 | Mandibular | Premolars + Canines |
| 4 | 0.2363 | -0.0604 | Mandibular | Premolars + Canines |
| 4 | 0.207 | -0.0972 | Mandibular | Premolars + Canines |
| 4 | 0.2243 | -0.055 | Mandibular | Premolars + Canines |
| 4 | 0.2931 | -0.0751 | Mandibular | Premolars + Canines |
| 4 | 0.2121 | -0.0707 | Mandibular | Premolars + Canines |
| 4 | 0.2008 | -0.0457 | Mandibular | Premolars + Canines |
| 4 | 0.2583 | -0.0807 | Mandibular | Premolars + Canines |
| 3 | 0.1303 | -0.0594 | Mandibular | Premolars + Canines |
| 3 | 0.1388 | -0.0709 | Mandibular | Premolars + Canines |
| 3 | 0.1204 | -0.0676 | Mandibular | Premolars + Canines |
| 3 | 0.1397 | -0.0681 | Mandibular | Premolars + Canines |
| 3 | 0.1272 | -0.0672 | Mandibular | Premolars + Canines |
| 3 | 0.1447 | -0.0667 | Mandibular | Premolars + Canines |
| 3 | 0.1427 | -0.0689 | Mandibular | Premolars + Canines |
| 3 | 0.1409 | -0.0669 | Mandibular | Premolars + Canines |
| 2 | 0.1325 | -0.039 | Mandibular | Premolars + Canines |
| 2 | 0.1114 | -0.0435 | Mandibular | Premolars + Canines |
| 2 | 0.11 | -0.0686 | Mandibular | Premolars + Canines |
| 2 | 0.1509 | -0.0657 | Mandibular | Premolars + Canines |
| 2 | 0.1364 | -0.0551 | Mandibular | Premolars + Canines |
| 2 | 0.1291 | -0.0601 | Mandibular | Premolars + Canines |
| 2 | 0.1263 | -0.0577 | Mandibular | Premolars + Canines |
| 2 | 0.1149 | -0.0555 | Mandibular | Premolars + Canines |

| | | | | |
|---|--------|---------|------------|---------------------|
| 5 | 0.1585 | -0.0568 | Mandibular | Premolars + Canines |
| 5 | 0.1643 | -0.0696 | Mandibular | Premolars + Canines |
| 5 | 0.1928 | -0.0628 | Mandibular | Premolars + Canines |
| 5 | 0.161 | -0.0758 | Mandibular | Premolars + Canines |
| 5 | 0.2075 | -0.0297 | Mandibular | Premolars + Canines |
| 5 | 0.1634 | -0.0942 | Mandibular | Premolars + Canines |
| 5 | 0.222 | -0.0434 | Mandibular | Premolars + Canines |
| 5 | 0.1545 | -0.0971 | Mandibular | Premolars + Canines |
| 1 | | | Mandibular | Premolars + Canines |
| 1 | | | Mandibular | Premolars + Canines |
| 1 | | | Mandibular | Premolars + Canines |
| 1 | | | Mandibular | Premolars + Canines |
| 1 | | | Mandibular | Premolars + Canines |
| 1 | | | Mandibular | Premolars + Canines |
| 1 | | | Mandibular | Premolars + Canines |
| 1 | | | Mandibular | Premolars + Canines |
| 4 | 0.2229 | -0.062 | Mandibular | Incisors |
| 4 | 0.1946 | -0.0626 | Mandibular | Incisors |
| 4 | 0.2261 | -0.055 | Mandibular | Incisors |
| 4 | 0.1764 | -0.0462 | Mandibular | Incisors |
| 4 | 0.1575 | -0.0644 | Mandibular | Incisors |
| 4 | 0.1663 | -0.0477 | Mandibular | Incisors |
| 4 | 0.1422 | -0.0553 | Mandibular | Incisors |
| 4 | 0.1964 | -0.0634 | Mandibular | Incisors |
| 3 | 0.1402 | -0.0656 | Mandibular | Incisors |
| 3 | 0.1194 | -0.072 | Mandibular | Incisors |
| 3 | 0.1108 | -0.0687 | Mandibular | Incisors |
| 3 | 0.117 | -0.0678 | Mandibular | Incisors |
| 3 | 0.1151 | -0.0671 | Mandibular | Incisors |
| 3 | 0.1197 | -0.0694 | Mandibular | Incisors |
| 3 | 0.1123 | -0.07 | Mandibular | Incisors |
| 3 | 0.1054 | -0.0662 | Mandibular | Incisors |
| 2 | 0.2092 | -0.0573 | Mandibular | Incisors |
| 2 | 0.1562 | -0.0608 | Mandibular | Incisors |
| 2 | 0.1818 | -0.0516 | Mandibular | Incisors |
| 2 | 0.1632 | -0.0702 | Mandibular | Incisors |
| 2 | 0.1835 | -0.0569 | Mandibular | Incisors |
| 2 | 0.1741 | -0.0582 | Mandibular | Incisors |
| 2 | 0.1778 | -0.0599 | Mandibular | Incisors |
| 2 | 0.1892 | -0.059 | Mandibular | Incisors |
| 5 | 0.1893 | -0.0597 | Mandibular | Incisors |
| 5 | 0.1729 | -0.0514 | Mandibular | Incisors |
| 5 | 0.2368 | -0.1005 | Mandibular | Incisors |
| 5 | 0.2132 | -0.0655 | Mandibular | Incisors |
| 5 | 0.1913 | -0.0505 | Mandibular | Incisors |
| 5 | 0.1459 | -0.0653 | Mandibular | Incisors |
| 5 | 0.2159 | -0.0534 | Mandibular | Incisors |

Trueness And Precision Of Scanners And Bracket Erase Softwares

Madison Sharp¹, C. McGill², W. Renne³,
C. Webb^{1,3}, V. Ramakrishnan², S. S. Huja¹

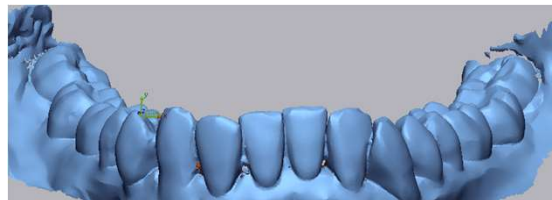
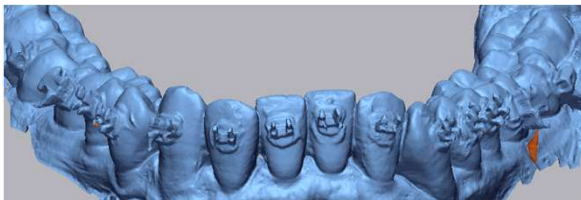
¹ Medical University of South Carolina, James B. Edwards College of Dental Medicine

² Medical University of South Carolina, Department of Public Health Sciences

³ Private Practice

Introduction and Background

- Digital workflows are rapidly being incorporated into clinical practice.
- One specific digital workflow is fabrication of retainers from predebond scans which can greatly improve the efficiency of orthodontic treatment delivered to our patients.



Background & Hypothesis

- Quantitative studies that provide a clinical basis of these applications are frequently lacking.
- This frequently leads to commercial and/or clinical claims that are difficult to validate.

We hypothesize that trueness and precision of bracket erase software is dependent on the scanner, tooth/morphology, and software used.

Materials and Methods

Intraoral Scanners (IOS) Evaluated:

3Shape Trios 4



Cerec Primescan



iTero Element 2



Medit i700



Planmeca Emerald S



Bracket Erase Software Evaluated:



FULLCONTOUR
by 3shape

easyrx



AUTODESK
MESHMIXER

Methods

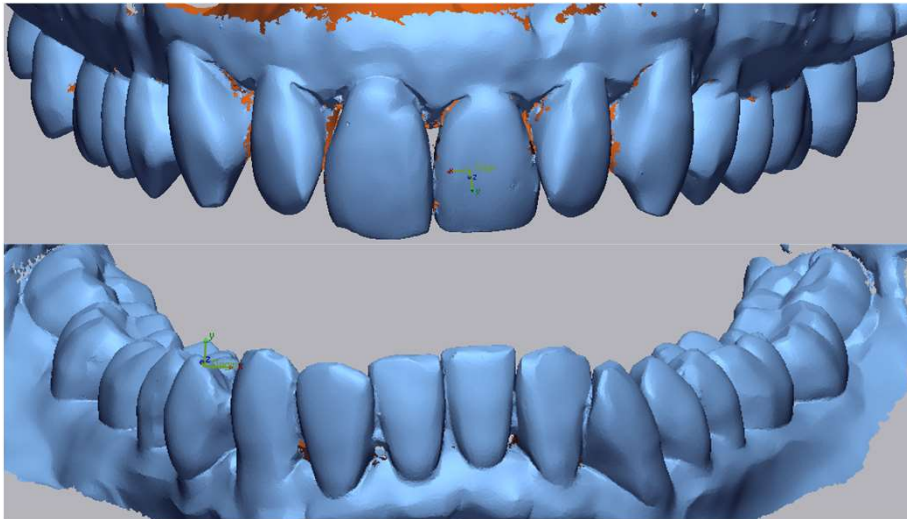
STL COLLECTION – Control Data

Cadaveric data captured with ATOS Capsule scanner

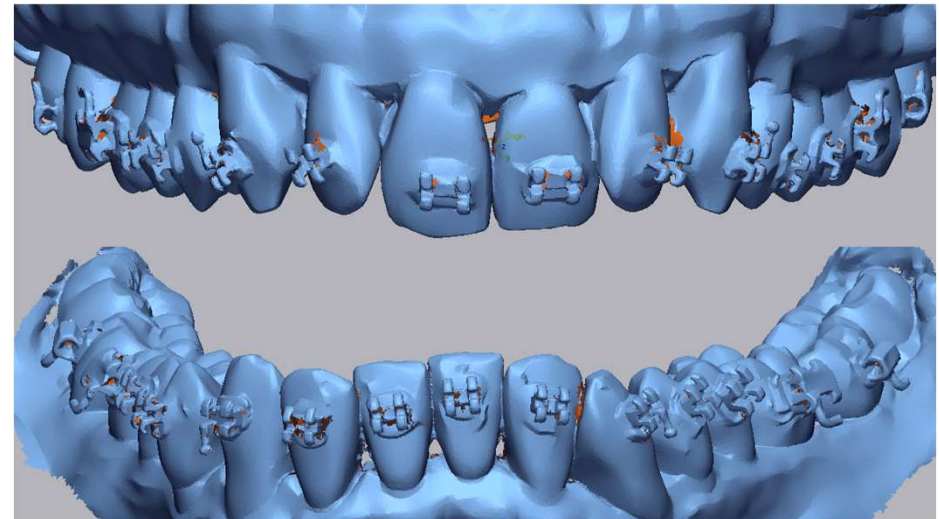
Cadaver pre-bracket (T_0)

Cadaver with brackets (T_1)

Cadaver Pre-bracket STLs



Cadaver Bracketed STLs



Methods

STL COLLECTION – Control Data

Cadaveric data captured with ATOS Capsule scanner
Cadaver pre-bracket
Cadaver with brackets

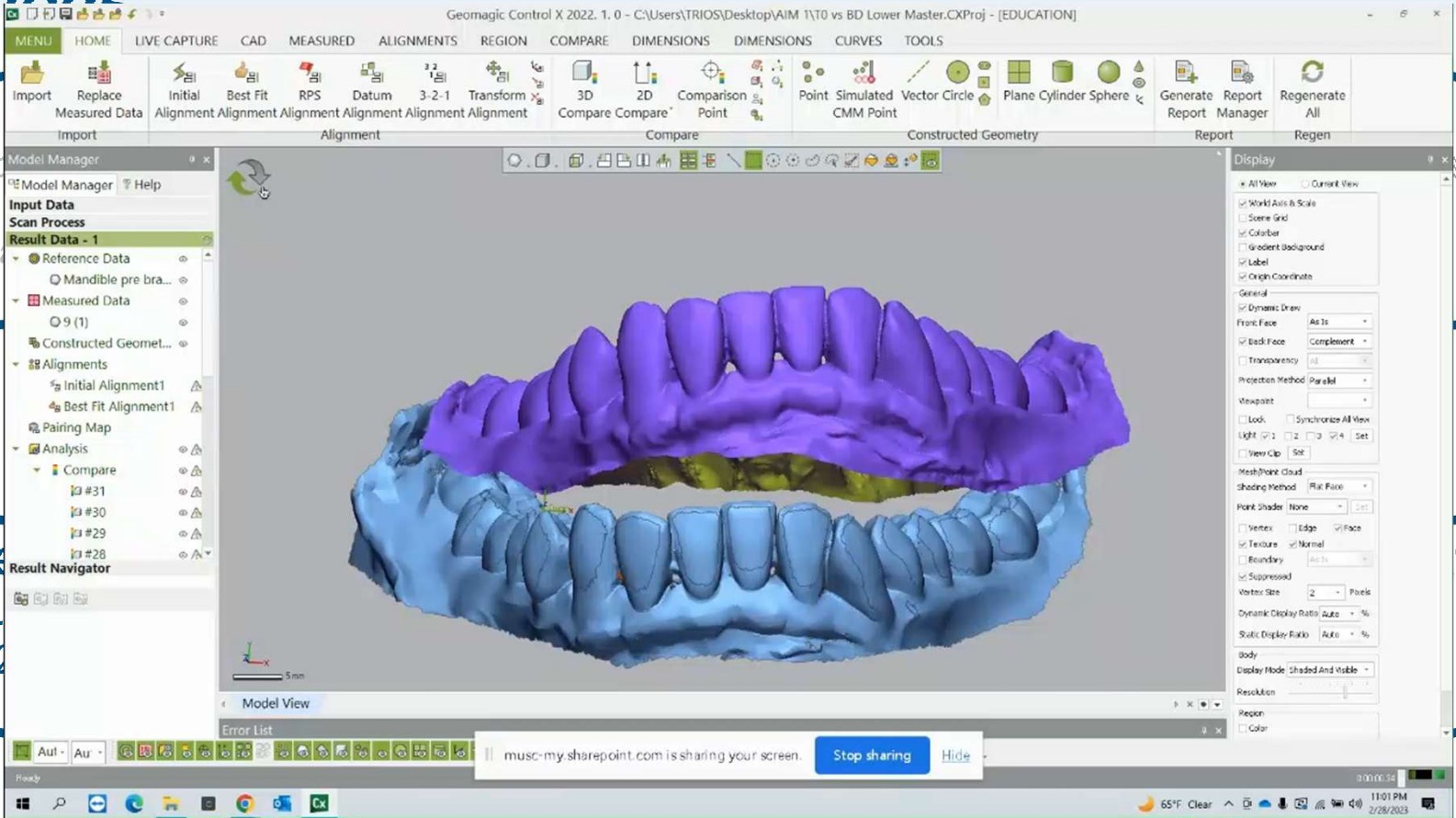
Scanner STL Files:

Cadaver arches pre-bracket scanned
8X/5 scanners
Cadaver arches with brackets scanned
8X/5 scanners

Bracket Erase STLs:

Bracketed cadaveric data processed
8X/arch/5 software

Methods



Scanned

1.

2.

used

ta

erased

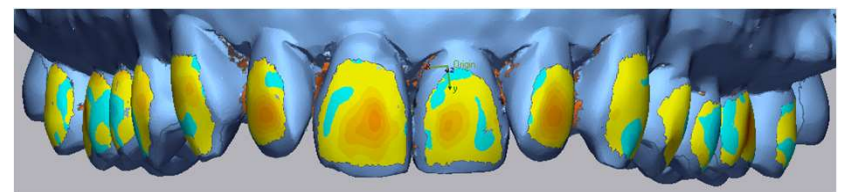
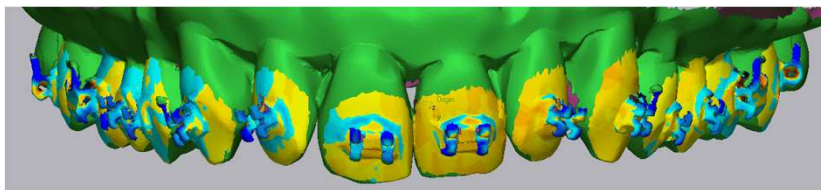
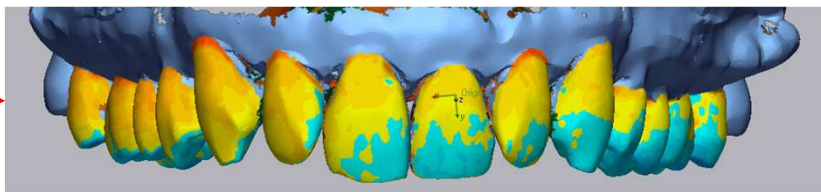
Methods

Scanner Error Data from STL files:

1. Pre-bracket ATOS vs. IOS
2. Bracketed ATOS vs. IOS

Bracket Erase Error Data from STL files:

3. Pre-Bracket ATOS vs. bracket erase



Statistical Methods and Estimated Mean Error

- In all models, a first-order autoregressive structure was used to account for the correlation between repeated measures.
- Positive and negative errors from scanning and bracket erasing were separately analyzed with linear regression models using predictors as follows.

Scanner Error in Unbracketed Teeth (T_0) Predictors:

- scanner and area(mandibular teeth, maxillary teeth, palate)

Scanner Error in Bracketed Teeth (T_1) Predictors:

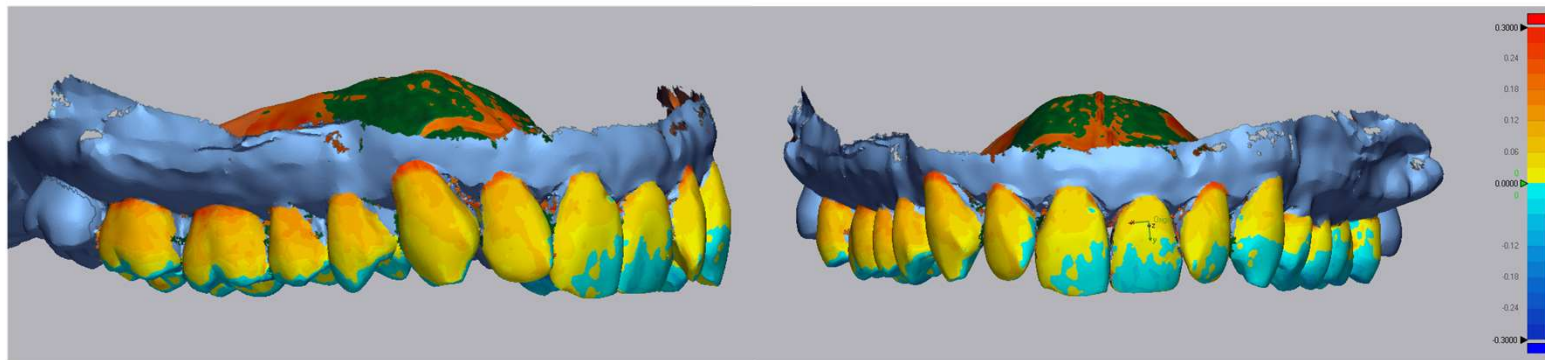
- scanner, arch(mandible, maxilla), scanner*arch interaction (when indicated)

Software Error in Bracket Erasing Predictors:

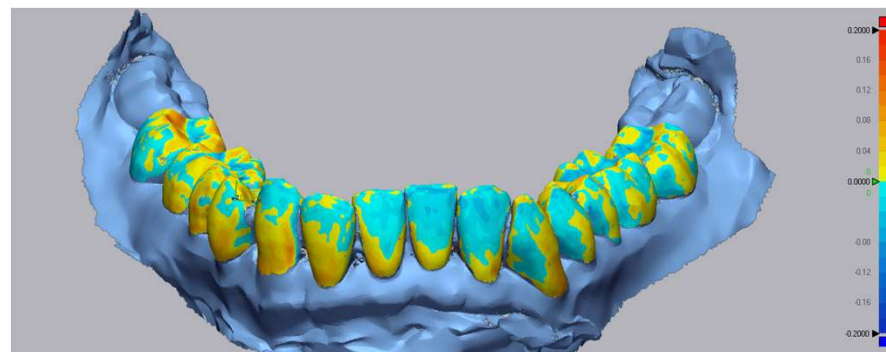
- software, tooth type (molar, pre-molar and canine, anterior), software*tooth type interaction

Pre-bracket Scanner Results

IOS vs. Maxillary Pre-bracket ATOS STL

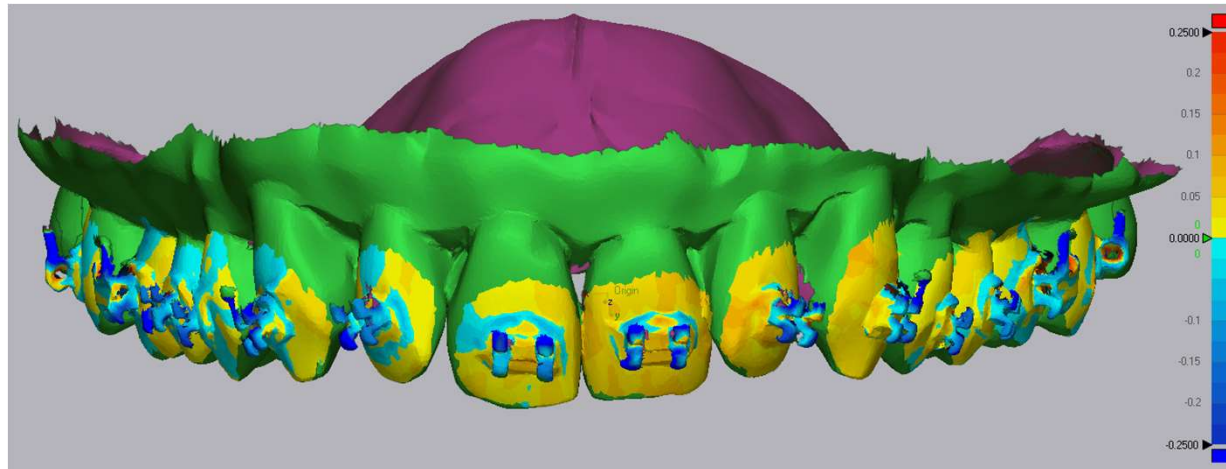


IOS vs. Mandibular Pre-bracket ATOS STL

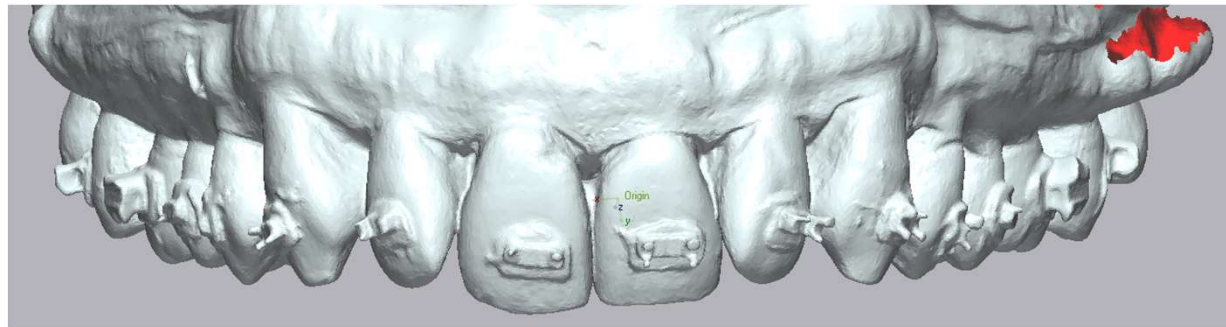


Bracketed Scanner Results

IOS vs. Bracketed Cadaver ATOS STL

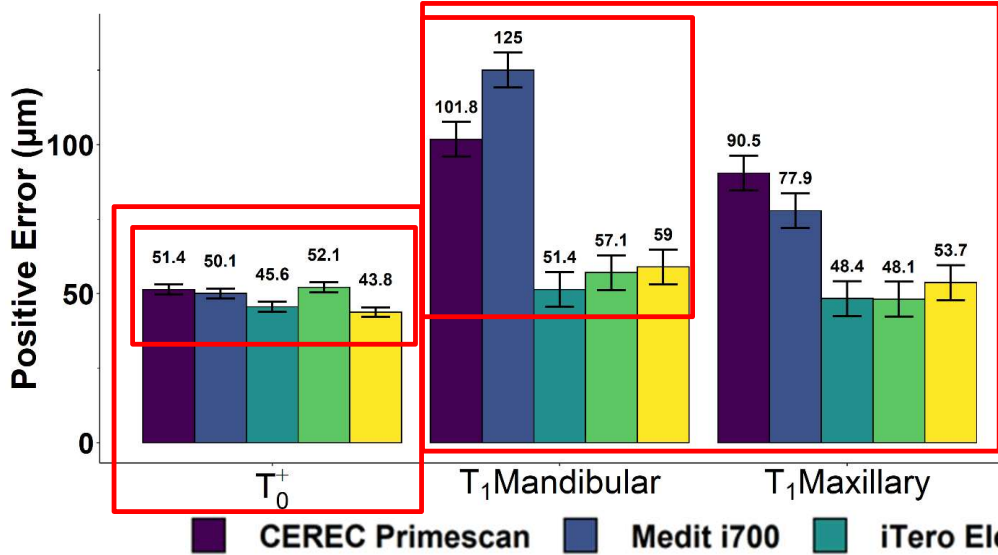


Bracketed IOS STL

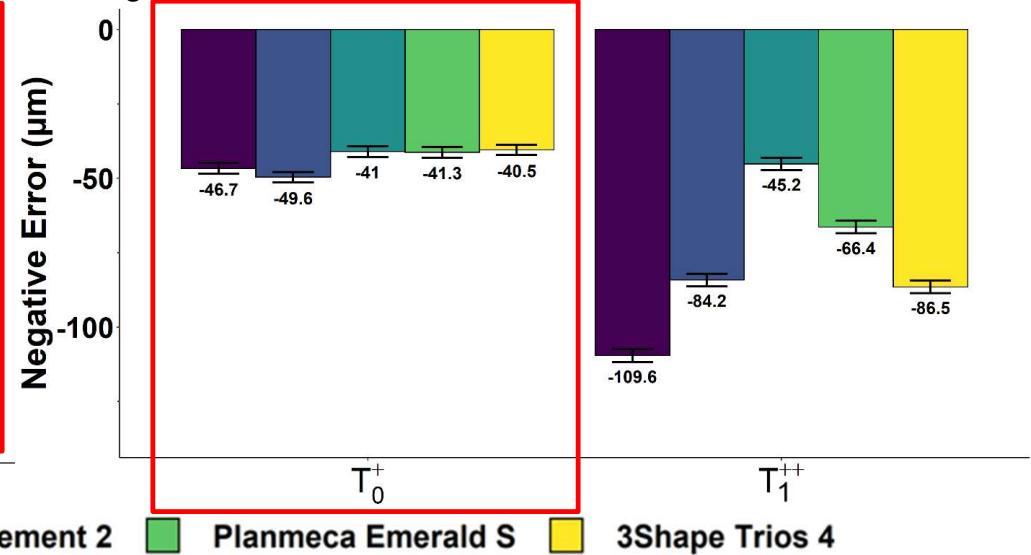


Pre-bracket and Bracketed Scanner Results

Positive IOS Error Averages and Confidence Intervals



Negative IOS Error Averages and Confidence Intervals



Pre-bracket Scanner Comparisons: Averages and Confidence Intervals

| Error Type | Minimum Error | Maximum Error | Difference (95% CI) [µm] |
|------------|----------------|--------------------|--------------------------|
| Positive | 3Shape Trios 4 | Planmeca Emerald S | 8.3 (1.7, 14.9)* |
| Negative | 3Shape Trios 4 | Medit i700 | -9.2 (-16.3, -2.0)* |

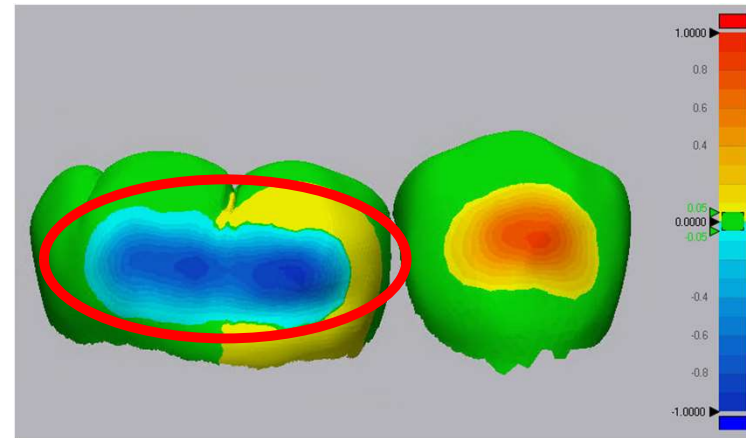
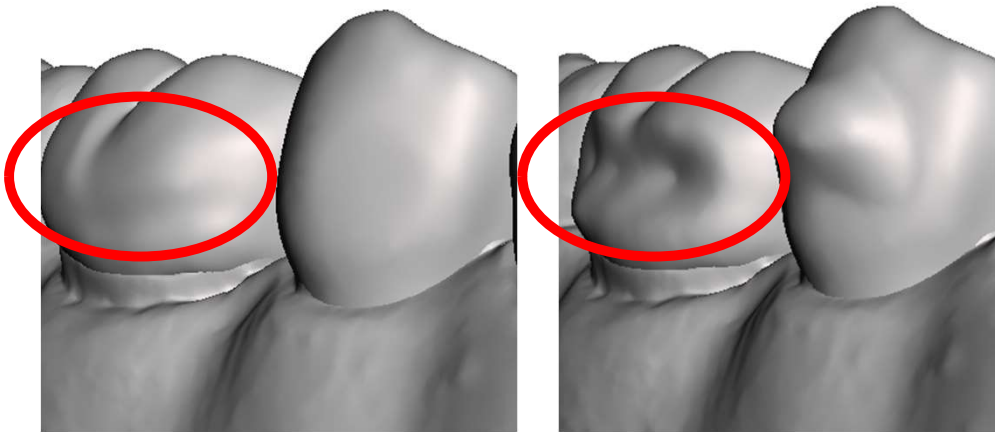
+Estimated means from modelling corrected for the effect of region (mandibular, maxillary, palate)

++Estimated means from modelling corrected for the effect of region (mandibular, maxillary)

*p<0.05

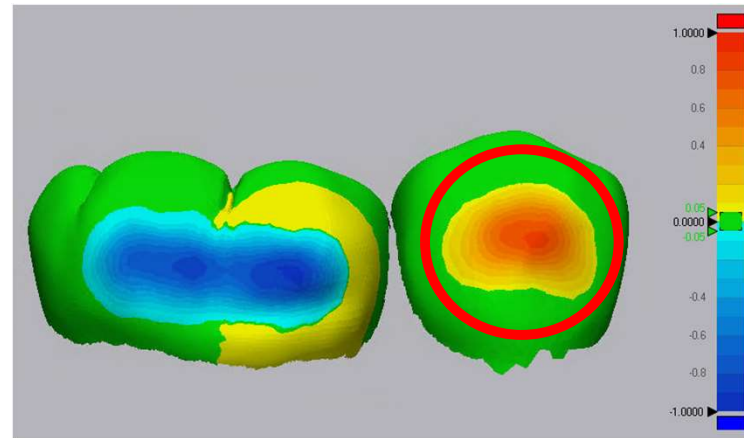
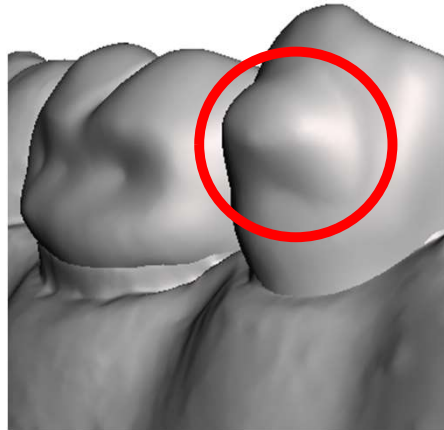
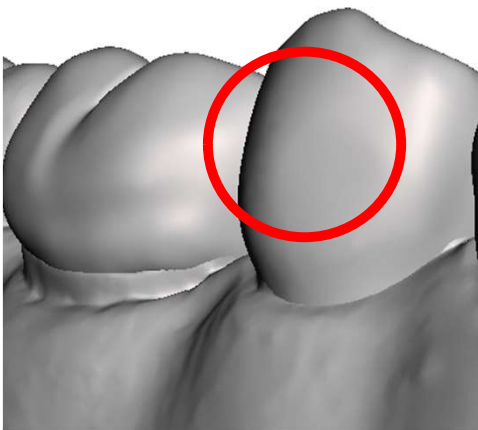
Understanding Bracket Erase Results

- Blue areas represent an areas where the bracket was over reduced
- Geomagic reports this error as a negative value.
- This is an area that will be filled when the retainer is fabricated resulting in a tighter retainer fit at the bracket site.

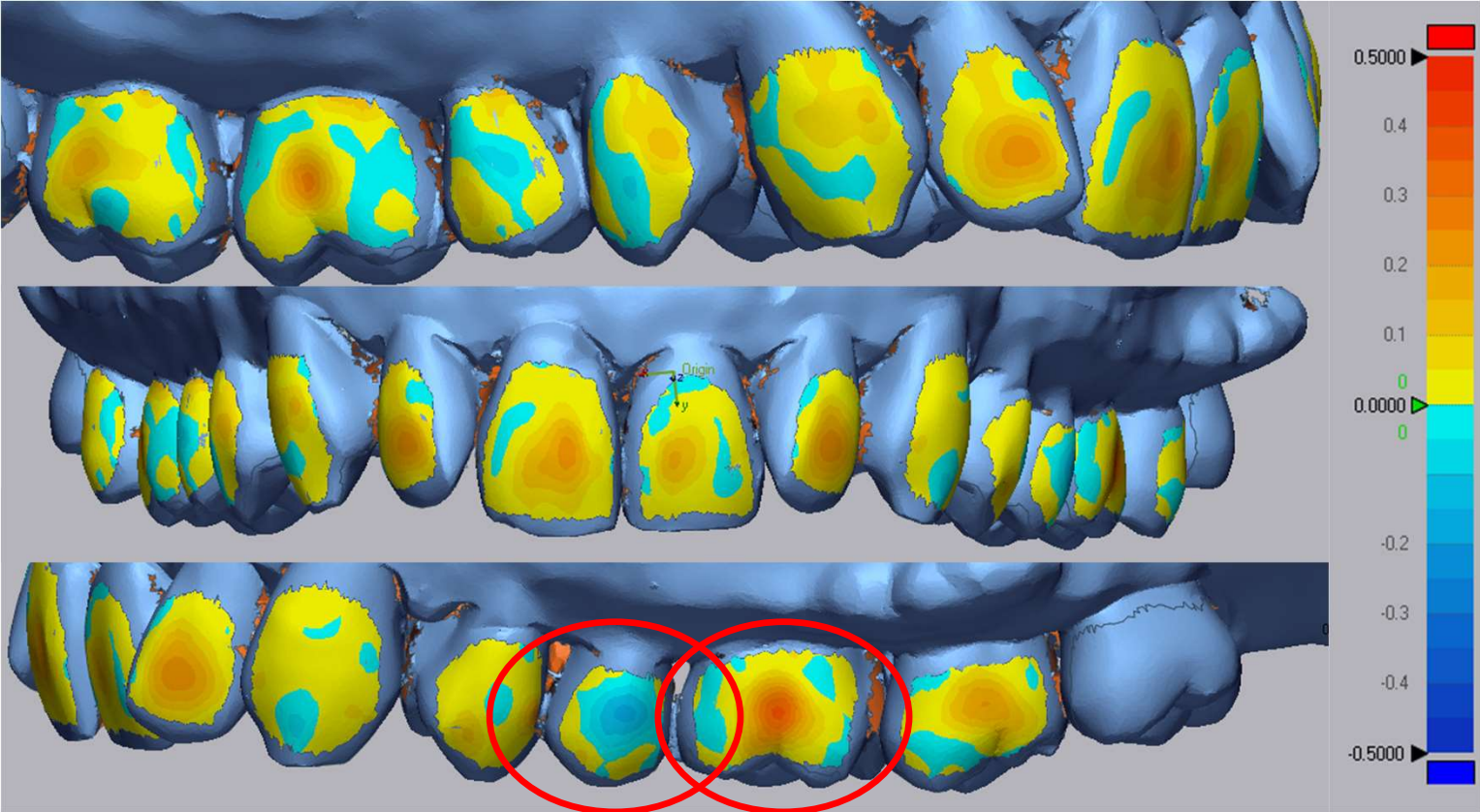


Understanding Bracket Erase Results

- Red/yellow areas represent areas where the bracket was underreduced
- Geomagic reports this error as a positive value.
- This is an area that will not contain retainer material resulting in a pocket at the bracket site

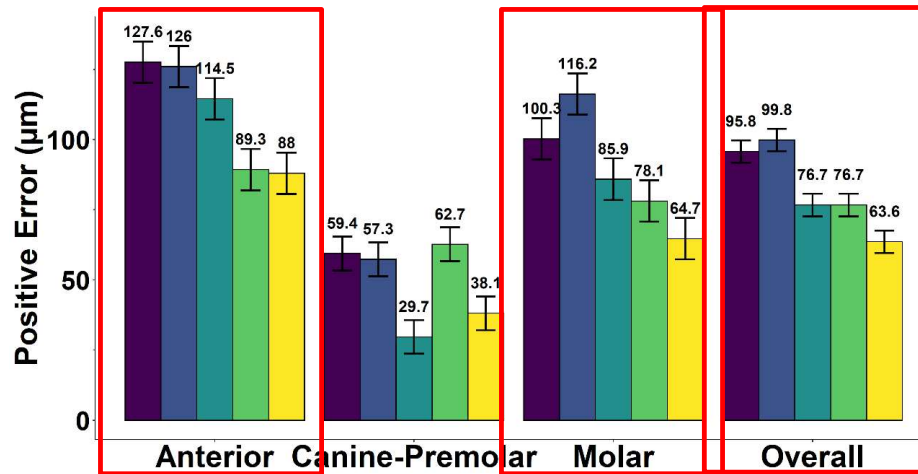


Maxillary Pre-bracket ATOS vs. bracket erase

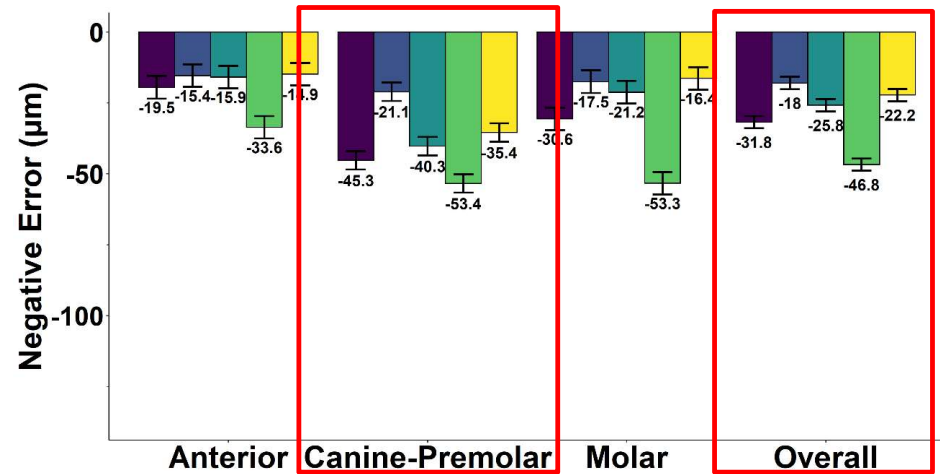


Bracket Erase Results

Positive Bracket Erase Error Averages and Confidence Intervals



Negative Bracket Erase Error Averages and Confidence Intervals



■ New England Orthodontic Lab
 ■ uLab
 ■ EasyRx
 ■ Full Contour (3Shape)
 ■ Meshmixer

CONCLUSIONS

- All evaluated scanners have a high degree of precision and have comparable trueness.
- While scanners are very comparable in rendering naïve tooth surface, complex orthodontic bracket morphology produces greater error that may not be clinically relevant.
- Bracket erase software tend to create a pocket at a bracket site rather than create a pressure point. Most error in these software will not have a clinical impact on a patient's retainer fit.
- Digital scanners and this workflow have a level of clinical accuracy that allows for effective and efficient patient care.

Acknowledgements / Conflict of Interest

American Association of Orthodontics Foundation Biomedical Research Award 2022-2024



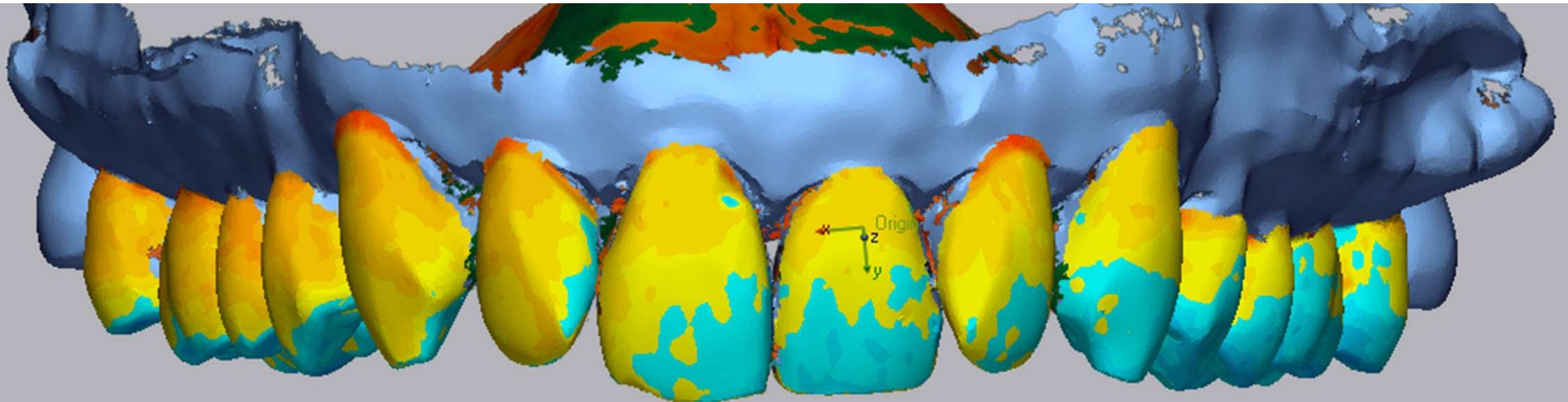
Research reported in this publication was supported by the National Institute of Dental & Craniofacial Research of the National Institutes of Health under Award Number 1R13DE030343-03. The content is solely the responsibility of the authors and does not necessarily represent the official views of the National Institutes of Health. (Travel Award to M.S.)



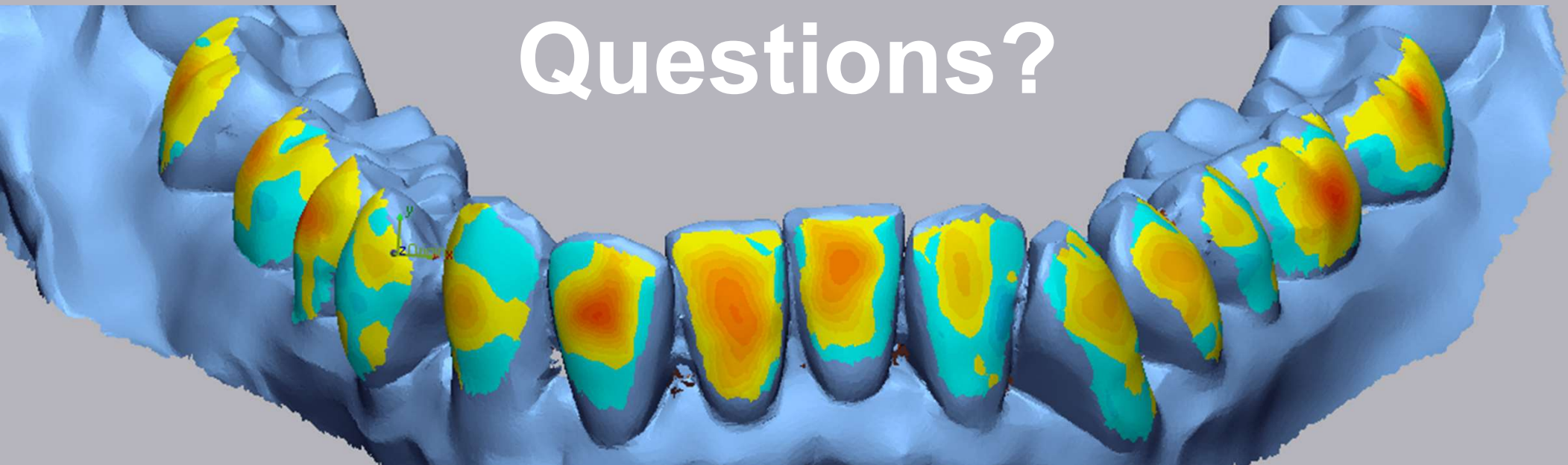
National Institute of Dental
and Craniofacial Research

Authors acknowledge EasyRx, Full Contour by 3Shape, uLab provided by Porth Orthodontics, and New England Orthodontic Lab for their support and assistance in the processing of bracket erases.

Conflicts of Interest: None



Questions?



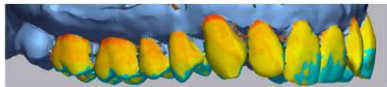
OBJECTIVE/BACKGROUND

Digital workflows are rapidly being incorporated into clinical practice. However, quantitative studies that provide a clinical basis of these applications are frequently lacking. One digital workflow is fabrication of retainers from prebond scans that greatly improve the efficiency of orthodontic treatment delivered to our patients. This study, aims 1. To evaluate trueness and precision of 5 intraoral scanners (3Shape Trios 4, Cerec Primescan, iTero Element 2, Medit i700 and Planmeca Emerald S vs. Gold standard ATOS). Scans of arches with and without orthodontic brackets will be evaluated. 2. To evaluate the trueness and precision of 5 commercially available laboratory software (EasyRx, Full Contour (3Shape), Meshmixer, New England Orthodontic Lab (NEOLab), and uLab). Impacts of tooth type/morphology will be evaluated for each software.

We hypothesize that trueness and precision of bracket erase software are impacted by the scanner used, tooth type/morphology, and the software being used.

METHODS

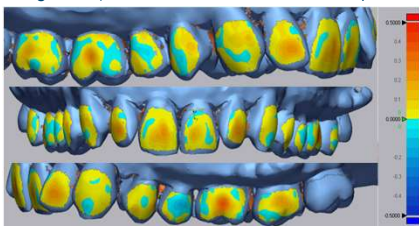
Figure 1. T₁ ATOS vs. IOS Comparison



Statistical Methods:
In all models, a first-order autoregressive structure was used to account for the correlation between repeated measures. Positive and negative errors from scanning and bracket erasing were separately analyzed with linear regression models using the following predictors:

- Scanner Error in Unbracketed Teeth (T₀) Predictors:**
- scanner and area (mandibular teeth, maxillary teeth, palate)
- Scanner Error in Bracketed Teeth (T₁) Predictors:**
- scanner, arch (mandible, maxilla), scanner*arch interaction (when indicated)
- Software Error in Bracket Erasing Predictors:**
- software, tooth type (molar, pre-molar and canine, anterior), software*tooth type interaction

Figure 2. T₁ ATOS vs. Bracket Erase Software Comparison



RESULTS

Figure 3. Maxillary and Mandibular T₀ ATOS vs. Scanner STL Comparison

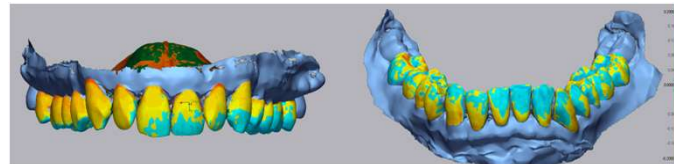


Figure 4. T₀ and T₁ Scanner Error

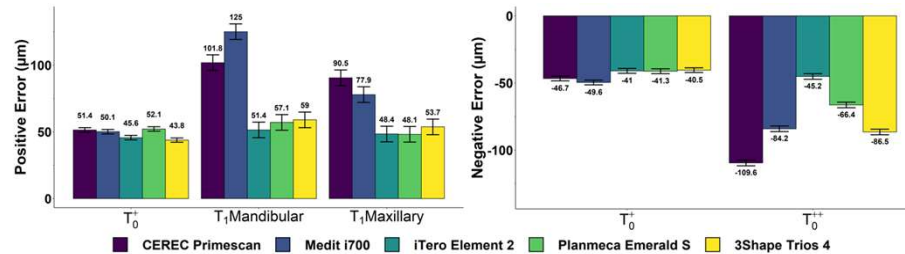


Table 1. T₀ Scanner Comparisons: Estimated Difference

| Error Type | Minimum Error (error) [µm] | Maximum Error (error) [µm] | Difference (95% CI) [µm] |
|------------|----------------------------|----------------------------|--------------------------|
| Positive | 3Shape Trios 4 (43.8) | Planmeca Emerald S (52.1) | 8.3 (1.5, 15.1)* |
| Negative | 3Shape Trios 4 (-40.5) | Medit i700 (-49.6) | -9.1 (-15.8, -2.6)* |

*p<0.05

Figure 5. Bracket Erase Software Error

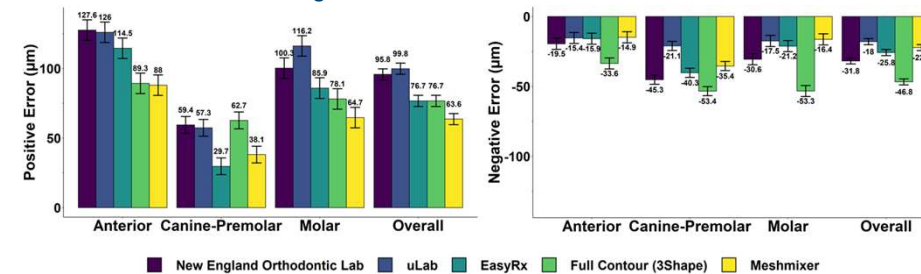
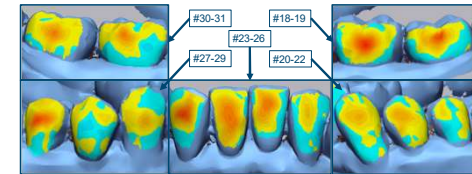


Table 2. Bracket Erase Comparisons: Estimated Difference

| Region | Positive Error | | | Negative Error | | |
|--------------------|--|---------------------------------------|--------------------------------|--|---------------------------------------|--------------------------------|
| | Software with Least Error (error) [µm] | Software with Most Error (error) [µm] | Error Difference (95% CI) [µm] | Software with Least Error (error) [µm] | Software with Most Error (error) [µm] | Error Difference (95% CI) [µm] |
| Anterior | Meshmixer (88.0) | NEOLab (127.6) | 39.6 (3.8, 75.3) | Meshmixer (-14.9) | Full Contour (-33.6) | -18.7 (-37.9, 0.6) |
| Canine – Premolars | EasyRx (29.7) | Full Contour (62.7) | 33.0 (3.6, 62.3) | uLab (-21.1) | Full Contour (-53.3) | -32.2* (16.6, 48.1) |
| Molars | Meshmixer (64.7) | uLab (116.2) | 51.5 (15.7, 87.3) | Meshmixer (-16.4) | Full Contour (-53.4) | -37.0* (-56.2, -17.7) |
| Overall | Meshmixer (63.6) | uLab (99.8) | 36.2 (20.6, 51.9) | uLab (-18.0) | Full Contour (-46.8) | -28.8* (-37.2, -20.4) |

*p<0.05

Figure 6. Mandibular T₀ ATOS vs. Bracket Erase Software



DISCUSSION

- Positive T₀ scanner error ranged from 43.8µm to 52.1µm. Negative T₀ scanner error ranged from -40.4µm to -49.6µm.
- For T₀ scanner error, no two scanners differ by more than 9.1 µm.
- The maximum width across all scanners of a CI for T₀ positive error (6.7µm) is 27.8% of the corresponding CI for T₁ positive error (24.1µm). This indicates greater precision when scanning teeth without brackets compared to teeth with brackets.
- Qualitative, this may be attributed to the ability of the ATOS industrial scanner and intraoral scanners to capture features of orthodontic brackets. We visually observed accurate scanning of bracket bases and maximum error on bracket tips.
- Bracket erase processing error ranged from 29.7µm to 127.6µm and -53.4µm to -14.9µm. All error was dependent on both software and tooth type.
- Smallest positive error values and highest negative error values were seen for premolars-canines across all software.
- Anterior and molar teeth had similar error. Anterior had slightly higher positive error and molars had slightly higher negative error.
- When evaluating error averaged across the entire dentition, uLab software had the smallest negative error while Full Contour's software had the greatest. (a minimal 28.8 µm difference) Meshmixer had the least overall positive error and uLab software had the greatest positive error. (a minimal 36.2 µm difference)
- Negative error, which would lead to fabrication of a retainer that is too tight, was less than 53.4 µm when across all software and regions.
- Limitations of study: These bracket comparisons also includes Geomagic Control X alignment error. Additionally, T₁ ATOS data contained "holes" in tooth interproximal and on portions of brackets. Despite this challenge, all bracket erase software performed to a clinically acceptable levels.

CONCLUSIONS

- All evaluated scanners have a high degree of precision and have comparable trueness.
- Bracket erase software tend to create a pocket at a bracket site rather than create a pressure point. Most error in these software will not have a clinical impact on a patient's retainer fit.
- While scanners are very comparable in rendering naïve tooth surface, complex orthodontic bracket morphology produces greater error.
- Digital scanners and workflow have the level of clinical accuracy that would allow an option for efficient patient care.

ACKNOWLEDGMENTS

American Association of Orthodontics Foundation Biomedical Research Award 2022-2024 (PI: Huja, Co-I Renne, Webb, Ramakrishnan)

Authors acknowledge EasyRx, Full Contour by 3Shape, Ulab provided by Porth Orthodontics, and New England Orthodontic Lab for their support and assistance in the processing of bracket erases. Dr. Anthony Merinito, Dr. Mark Ludlow, and Dr. Christian Brenes assisted in the repeated scans.